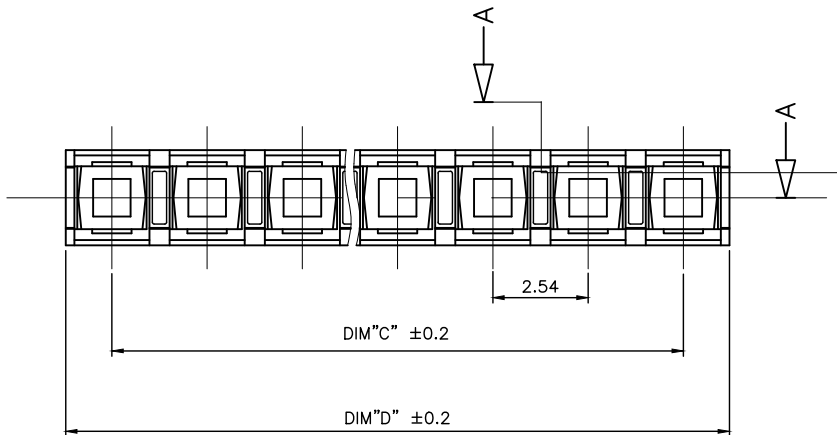
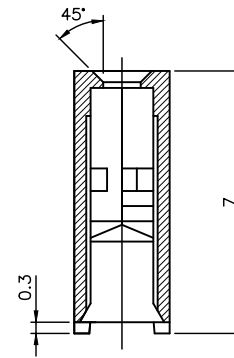
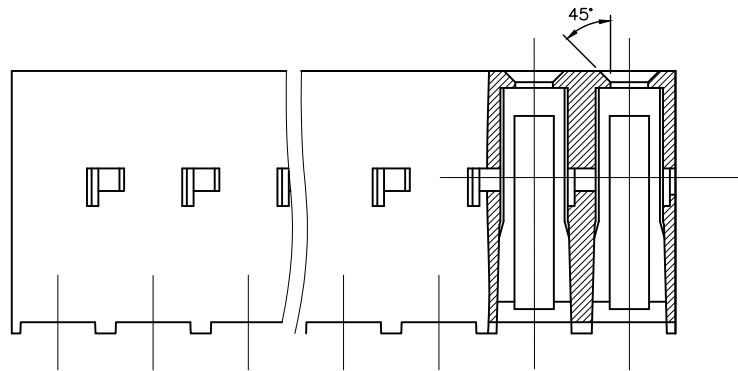
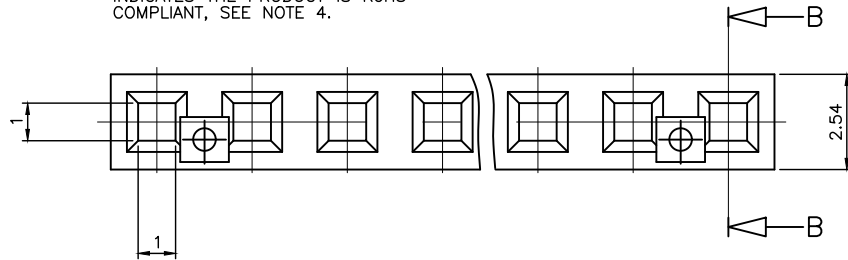


| PRODUCT NUMBER | MATERIAL   | DIM"C" & DIM"D" |
|----------------|------------|-----------------|
| 65235-6XXLF    | SEE NOTE 1 | SEE SHEET 2     |
| 65235-9XXLF    | SEE NOTE 2 | SEE SHEET 2     |

WHEN NEEDED, SUFFIX LETTER "LF" INDICATES THE PRODUCT IS RoHS COMPLIANT, SEE NOTE 4.



NOTES:

- 1 - MATERIAL HOUSING: TERMOPLASTIC GLASS FILLED FLAME RETARDANT PER UL94 V-0, COLOR BLACK
  - 2 - MATERIAL HOUSING: TERMOPLASTIC POLYESTER, 30% GLASS FILLED COLOUR BLUE, FLAME RETARDANT PER UL94 V-0.
  - 3 - ABOVE 25 POS. ON SPECIAL REQUEST.
  - 4 - RoHS COMPATIBLE PRODUCT SPECIFICATIONS
    - a - LABELING:
      - MEETS PACKAGING SPECS AS PER GS-14-920
    - b - LEGAL STATEMENT: SEE GS-22-008
- THE PRODUCT IS NOT INTENDED TO BE EXPOSED TO A MANUFACTURING SOLDER PROCESS.

CUSTOMER DRAWING FOR REFERENCE ONLY

| mat'l. code |                | surface  |          | tolerance                             |            | projection |              | product family   |  |
|-------------|----------------|----------|----------|---------------------------------------|------------|------------|--------------|------------------|--|
| SEE NOTES   |                | ISO 1302 | ISO 406  | ISO 1011                              | ISO 406    |            | DUBOX VCC SR |                  |  |
| ltr         | ecr no         | dr       | date     | tolerances unless otherwise specified |            | mm         |              | title            |  |
| A           | F60655         | PNZ      | 96.09.19 | angles                                | linear     | scale 10:1 |              | HOUSING          |  |
| B           | F03-0284       | DLE      | 03.10.07 |                                       |            |            |              | dwg no           |  |
| C           | F06-0198       | DLE      | 06.06.13 |                                       |            |            |              | sheet 1 of 2     |  |
| D           | F-26374        | DDE      | 17.03.15 | dr                                    | P.NIZZI    | 96.09.19   |              | 65235            |  |
| E           | F-32711        | LMU      | 19.02.18 | engr                                  | JM.PHAMVAN | 96.09.19   |              | A3               |  |
|             |                |          |          | chr                                   | P.NIZZI    | 96.09.19   |              | type             |  |
|             |                |          |          | appd                                  | JMP        | 96.09.19   |              | CUSTOMER Drawing |  |
| sheet index | revision sheet | E        | D        |                                       |            |            |              |                  |  |
|             | 1              | 2        |          |                                       |            |            |              |                  |  |

| PRODUCT NUMBER | NB OF POS. | DIM"C"±0.2 | DIM"D"±0.2 |
|----------------|------------|------------|------------|
| 65235-X02LF    | 1x02       | 2.54       | 5.00       |
| 65235-X03LF    | 1x03       | 5.08       | 7.54       |
| 65235-X04LF    | 1x04       | 7.62       | 10.08      |
| 65235-X05LF    | 1x05       | 10.16      | 12.62      |
| 65235-X06LF    | 1x06       | 12.70      | 15.16      |
| 65235-X07LF    | 1x07       | 15.24      | 17.70      |
| 65235-X08LF    | 1x08       | 17.78      | 20.24      |
| 65235-X09LF    | 1x09       | 20.32      | 22.78      |
| 65235-X10LF    | 1x10       | 22.86      | 25.32      |
| 65235-X11LF    | 1x11       | 25.40      | 27.86      |
| 65235-X12LF    | 1x12       | 27.94      | 30.40      |
| 65235-X13LF    | 1x13       | 30.48      | 32.94      |
| 65235-X14LF    | 1x14       | 33.02      | 35.48      |
| 65235-X15LF    | 1x15       | 35.56      | 38.02      |
| 65235-X16LF    | 1x16       | 38.10      | 40.56      |
| 65235-X17LF    | 1x17       | 40.64      | 43.10      |
| 65235-X18LF    | 1x18       | 43.18      | 45.64      |
| 65235-X19LF    | 1x19       | 45.72      | 48.18      |
| 65235-X20LF    | 1x20       | 48.26      | 50.72      |
| 65235-X21LF    | 1x21       | 50.80      | 53.26      |
| 65235-X22LF    | 1x22       | 53.34      | 55.80      |
| 65235-X23LF    | 1x23       | 55.88      | 58.34      |
| 65235-X24LF    | 1x24       | 58.42      | 60.88      |
| 65235-X25LF    | 1x25       | 60.96      | 63.42      |
| 65235-X26LF    | 1x26       | 63.50      | 65.96      |

| PRODUCT NUMBER | NB OF POS. | DIM"C"±0.2 | DIM"D"±0.2 |
|----------------|------------|------------|------------|
| 65235-X27LF    | 1x27       | 66.04      | 68.50      |
| 65235-X28LF    | 1x28       | 68.58      | 71.04      |
| 65235-X29LF    | 1x29       | 71.12      | 73.58      |
| 65235-X30LF    | 1x30       | 73.66      | 76.12      |
| 65235-X31LF    | 1x31       | 76.20      | 78.66      |
| 65235-X32LF    | 1x32       | 78.74      | 81.20      |
| 65235-X33LF    | 1x33       | 81.28      | 83.74      |
| 65235-X34LF    | 1x34       | 83.82      | 86.28      |
| 65235-X35LF    | 1x35       | 86.36      | 88.82      |
| 65235-X36LF    | 1x36       | 88.90      | 91.36      |
| 65235-X37LF    | 1x37       | 91.44      | 93.90      |
| 65235-X38LF    | 1x38       | 93.98      | 96.44      |
| 65235-X39LF    | 1x39       | 96.52      | 98.98      |
| 65235-X40LF    | 1x40       | 99.06      | 101.52     |
| 65235-X41LF    | 1x41       | 101.60     | 104.06     |
| 65235-X42LF    | 1x42       | 104.14     | 106.60     |
| 65235-X43LF    | 1x43       | 106.68     | 109.14     |
| 65235-X44LF    | 1x44       | 109.22     | 111.68     |
| 65235-X45LF    | 1x45       | 111.76     | 114.22     |
| 65235-X46LF    | 1x46       | 114.30     | 116.76     |
| 65235-X47LF    | 1x47       | 116.84     | 119.30     |
| 65235-X48LF    | 1x48       | 119.38     | 121.84     |
| 65235-X49LF    | 1x49       | 121.92     | 124.38     |
| 65235-X50LF    | 1x50       | 124.46     | 126.92     |

|                         |  |                                       |  |             |  |            |  |                               |  |
|-------------------------|--|---------------------------------------|--|-------------|--|------------|--|-------------------------------|--|
| mat'l. code             |  | surface                               |  | tolerance   |  | projection |  | product family                |  |
|                         |  | ISO 1302                              |  | ISO 406 ISO |  | 1st        |  | DX VCC SR                     |  |
| lfr ecn no dr date      |  | tolerances unless otherwise specified |  | angles      |  | mm         |  | title                         |  |
| A F06055 PNZ 06.09.19   |  | linear                                |  | .0±.x       |  | ←          |  | HOUSING                       |  |
| B F06-0198 DLE 06.06.13 |  | O±x'                                  |  | .00±.0x     |  | scale N/A  |  | dwg no                        |  |
| C F-26374 DDE 17.03.15  |  | D LEGRAND                             |  | 06.06.12    |  |            |  | sheet 2 of 2                  |  |
| D F-32711 LMU 19.02.18  |  | enrg P NIZZI                          |  | 06.06.12    |  |            |  | 65235                         |  |
|                         |  | chr D LE                              |  | 06.06.12    |  |            |  | A2                            |  |
|                         |  | appd P NZ                             |  | 06.06.12    |  |            |  | type Product Customer Drawing |  |
| sheet index             |  | revision sheet                        |  |             |  |            |  |                               |  |



Copyright: FCI