

REFERENCE SPECIFICATION

- NFC 93425 (in compliance with HE 507)

PHYSICAL CHARACTERISTICS

- INSULATOR MATERIEL : THERMOPLASTIC / STANDARD MATERIAL
- CONTACT MATERIAL : BRASS (POWER CONTACT)
- ACCESSORIES: BRASS
- SHELLS : STEEL

ELECTRICAL CHARACTERISTICS

- CLIMATIC CATEGORY : 55/125/21
- TEMPERATURE RANGE -55°C TO + 125°C
- DAMP HEAT STEADY STATE 21 DAYS
- SALT SPRAY 24 HOURS

MECHANICAL CHARACTERISTICS

- RETENTION AGAINST TORQUE: - Threaded insert: 0.7 N.m mini
- Female screw lock: 0.5 N.m mini

METALLIZED HOLE DIMENSION

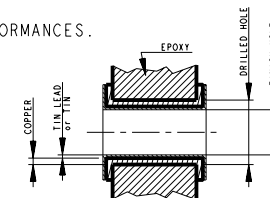
P.C.B. HOLE DEFINITION (NOTE 1 AND NOTE2)	DRILL DIAMETER	HOLE PRESS FIT TIN LEAD BOARD FINISH (Power contact)	HOLE PRESS FIT PURE TIN BOARD FINISH (Power contact)	HOLE TIN LEAD BOARD FINISH		HOLE PURE TIN BOARD FINISH	
		FOR PRESS-FIT HARPOONS	FOR OTHER ACCESSORIES	FOR PRESS-FIT HARPOONS	FOR OTHER ACCESSORIES		
	DRILLED HOLE	Ø3.22±0.03	Ø3.22±0.03	Ø3.22±0.03	Ø3.10±0.1 after plating	Ø3.22±0.03	Ø3.10±0.1 after plating
	COPPER PLATING	25µ mini (recommended 50µ maxi)	25µ mini (recommended 50µ maxi)	25µ mini (recommended 50µ maxi)		25µ mini (recommended 50µ maxi)	
	FINISH HOLE (AFTER REFLOW)	Ø3.02-3.20	Ø3.08-3.20	Ø3.02-3.20		Ø3.02-3.20	
	TIN LEAD PLATING	15µ maxi (recommended 5µ mini)		15µ maxi (recommended 5µ mini)			
	TIN PLATING		0.8 to 1.2µ			0.8 to 1.2µ	

NOTE-1: THESE DIMENSIONS MUST BE RESPECT TO SECURE PRESS-FIT PIN PERFORMANCES.
NOTE-2: ACCORDING TO IEC-352-5 SPEC.

NOTE-3: MAJOR REQUIREMENT FOR PRESS FIT PIN PERFORMANCE

PRESS-FIT PERFORMANCES

	PRESS-FIT CONTACTS	PRESS-FIT HARPOONS
INSERTION FORCE	<200 N AVERAGE INSERTION 160N	<200 N AVERAGE INSERTION 160N
EXTRACTION FORCE	> 30N	> 30N



APPLICATION TOOLINGS

- SEE C01-8639-004 for insertion
- SEE C01-8639-0005 for extraction

PERFORMANCE LEVELS

500 MATING/UNMATING - GOLD CONTACT AREA	D*****C6*40**	40 A
200 MATING/UNMATING - GOLD CONTACT AREA	D*****C5*40**	
PROTECTION	PART NUMBER	MAX CURRENT POWER

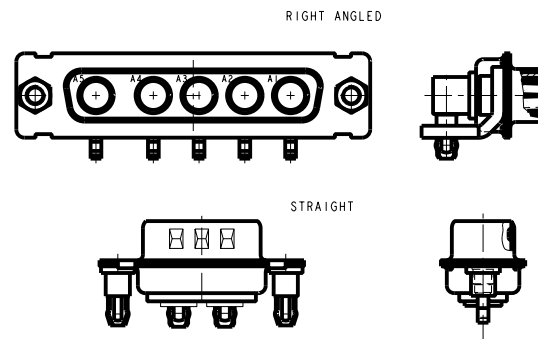
PLATING FOR TIN LEAD VERSION

- CONTACT: GOLD OVER NICKEL ON ACTIVE AREA
- TIN LEAD OVER COPPER ON TERMINATION
- SHELLS AND ACCESSORIES : TIN LEAD OVER COPPER

PLATING FOR TIN VERSION

NOTE RoHS INFORMATIONS

- The "LF" products meet European union Directives and other country regulations as described in GS-22-008
- Active part: Gold over Nickel
- Termination plating spec:(copper optional)+nickel+bright pure tin
- Shell plating: (copper optional)+nickel+bright pure tin
- Accessories: (copper optional) + nickel + bright pure tin
- Packaging spec: see GS-14-920



www.fciconnect.com		surface -	tolerance std	projection	mm
		ISO 1302 ✓	ISO 406 ISO 1101		
		TOLERANCES UNLESS OTHERWISE SPECIFIED			
Dr	JARRY	05/02/01	ANGULAR	LINEAR	size A3 Scale 1:1
Eng			0° ±2°	0.X ±0.3	
Chr				0.XX ±0.1	
Appr	LEGARE	05/02/01		0.XXX ±0.05	ECN LS05-004
		Product family	Spec ref		
		PWR PRESS-FIT		dwg no	Rev.
		GENERAL CHARACTERISTICS		C01-8639-0002	H
		catalog no	CUSTOMER		sheet 1 of 1

rev	ecn no	dr	date
D	-	SBA	03/09/03
E	-	LMA	27/01/05
F	LS05-0039	MPE	06/06/05
H	LS06-0201	MPE	2006/11/28
-	-	-	-
-	-	-	-
-	-	-	-