

**Griplet®**

**Amphenol Information Communications  
and Commercial Products**

**≡FCi Basics**

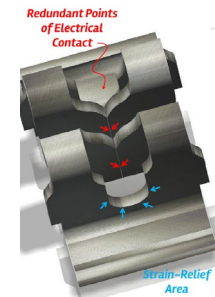
**Amphenol ICC**

- Value Proposition
- Product Specifications
- Features & Benefits
- Part Numbers
- Markets & Application
- Marketing Collaterals

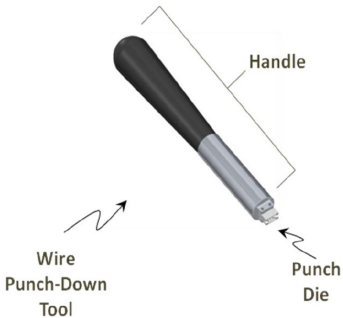
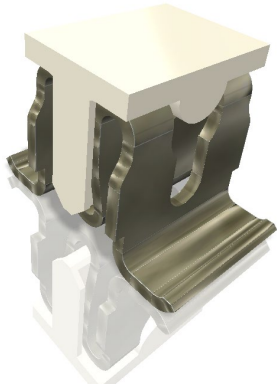
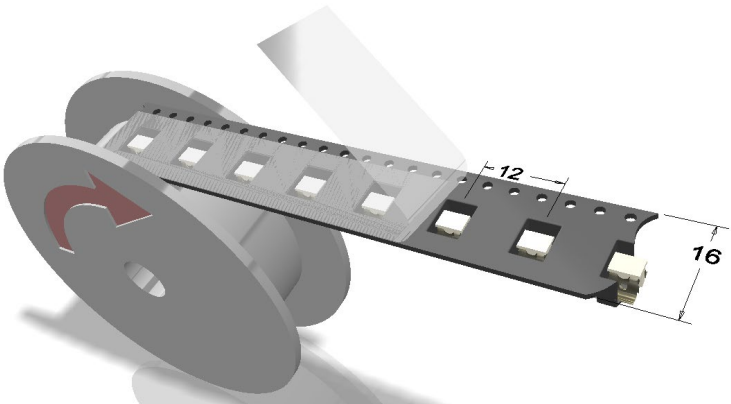
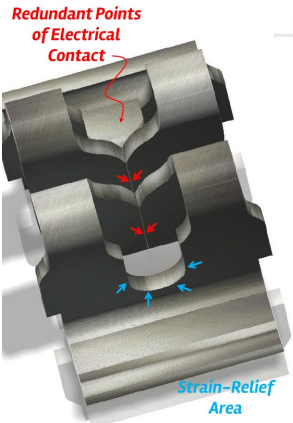
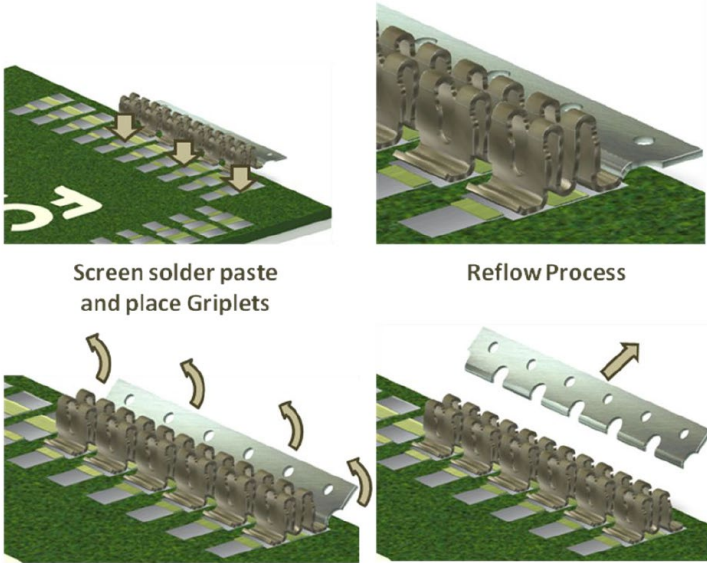
**Griplet®** is a miniature **IDC** (Insulation-Displacement Contact) **Wire-To-Board** solution with **compact and low profile design**.

The **unique Griplet® design** allow the **allocation** of the contacts **anywhere on the PCB** and **accommodates multiple wire sizes 16 to 30 AWG** stranded and solid wire.

Griplet® solution has **four points of wire contact** to provide **excellent High Vibration** and **Highly reliable connection** to enable **harsh and industrial applications** with **direct connection** between individual **wires** and **PCB** performance,



# Product Overview



## Product Facts

- Repairability: a wire may be removed and replaced by another wire of same size and type a maximum of TWO times.
- [2 part numbers](#) accommodates multiple wire sizes 16-30 AWG stranded and solid wire
- Four points of wire contact plus strain relief provide excellent High Vibration performance and Highly reliable connection for harsh and industrial applications with direct connection between individual wires and PCB

## Performance Characteristics

- Operating Voltage Rating: 120 V maximum, AC or DC
- [20-30AWG](#) Operating Current Rating: [1.5 to 8.5 A](#) maximum (wire-dependent), 30 degrees maximum t-rise above ambient, no air-flow.
- [16-20AWG](#) Operating Current Rating: [8.5 to 15 A](#) maximum (wire-dependent), 30 degrees maximum t-rise above ambient, no air-flow.
- Operating Temperature Range: -40C to +105C

## Specifications

- Product Spec. : GS-12-1234

## Materials

- Contact : Copper alloy
- Plating: Pre-Plated Lead-Free Tin over Nickel

Features	Benefits
Connect an insulated wire directly to a printed circuit board	Cost effective
Repairability	A wire may be removed and replaced by another wire of same size and type a maximum of TWO times.
Multiple wire sizes 16-30 AWG accommodations	Comprehensive solution for all needs
Four points of wire contact	High Vibration Performance and Highly reliable connection for harsh and industrial applications with direct connection between individual wires and PCB
Pick up Cap	Automated Application
Break-Off Carrier Strip 90° bend (AWG 20-30)	Fast Application
Low profile and compact design	Designed for tight space and easy to install.
Individual contacts can be located anywhere on the PCB	Flexible Design
Insertion tool for insulated wire is available	Fast Application

Description	Part Numbers	
Range	30 to 20AWG	20 to 16AWG
Terminals on carrier strip on continuous reel	10127850-001LF	Not available
Terminal with pick up cap in Tape & Reel	10127850-101TRLF	10150494-101TRLF
Insertion Tool	10131832	10151530

- Industrial & Instrumentation

- Smart Meters

- Thermostats

- Automation Controls

- Sensors

- LED Lighting

- White Goods

- Automotive





## Available on AICC

- Technical Data Sheet
- Drawings
- Product presentation
- Product specification
- Video
- Demo boards and boxes

**FCi Basics** Amphenol ICC

### Griplet® Miniature IDC Connector

**RELIABLE CONNECTION AND EASE OF INSTALLATION FOR WIRE-TO-BOARD TERMINATIONS**

Amphenol ICC's Griplet® Miniature IDC Connector offers a robust solution for miniature IDC Wire-to-Board connections. Each connector comes in 5mm pitch, has a 3.80mm profile and 4mm width. Its low profile and compact design makes Griplet® an ideal connector where space is tight and ease of installation is important.

- Four points of wire contact plus strain relief ensures highly reliable connection
- Wire applied and insulated directly to a PCB to maximise cost efficiency
- Multiple wire sizes from 30 to 20AWG



**TARGET MARKETS**



FEATURES	BENEFITS
<ul style="list-style-type: none"><li>• Accommodates multiple wire sizes from 30 to 20AWG</li><li>• Four points of wire contact plus strain relief</li></ul>	<ul style="list-style-type: none"><li>• Comprehensive solution for all application needs</li><li>• Ensures highly reliable connection</li><li>• Enables harsh and industrial market applications with direct connection between individual wires and PCB</li></ul>
<ul style="list-style-type: none"><li>• Accommodates multiple wire size</li><li>• Break-off carrier strip</li><li>• Post applied insulative housings</li></ul>	<ul style="list-style-type: none"><li>• Reduced total applied cost compared to solder or crimp processes</li><li>• 90° bend allows easy break away and removal</li><li>• Custom-made housing for automatic Pick &amp; Place</li></ul>
<ul style="list-style-type: none"><li>• Multiple Terminal Delivery Options:<ul style="list-style-type: none"><li>• Singulated in bags</li><li>• On Reel/ Continuous strip</li><li>• Stitched on pitch within disposable Pick &amp; Place carrier</li></ul></li></ul>	<ul style="list-style-type: none"><li>• Manual application or Vibratory bowl application</li><li>• Automated application</li><li>• Customizable pitch</li></ul>

Amphenol Information Communications and Commercial Products

# Amphenol ICC

THANK YOU