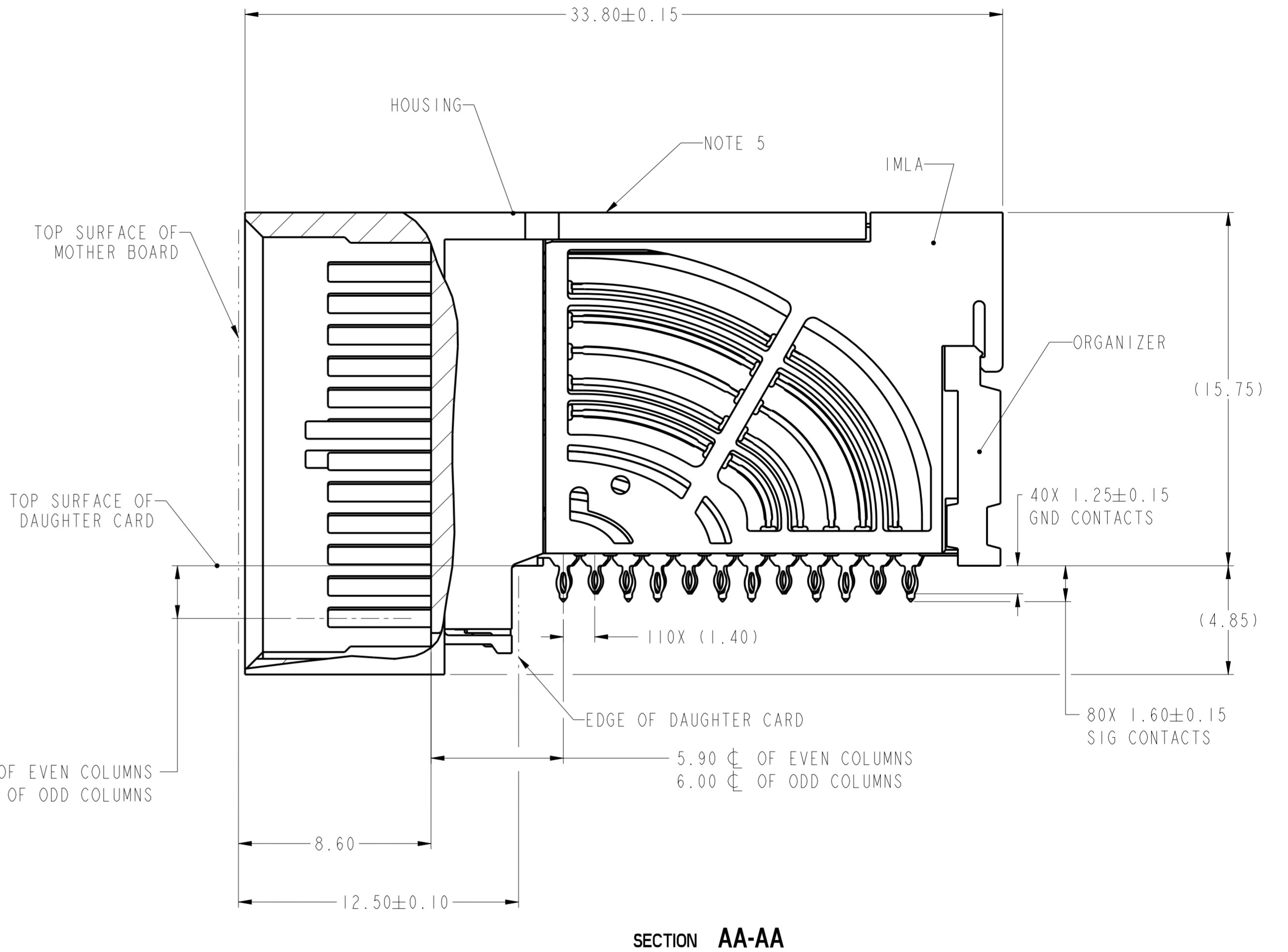
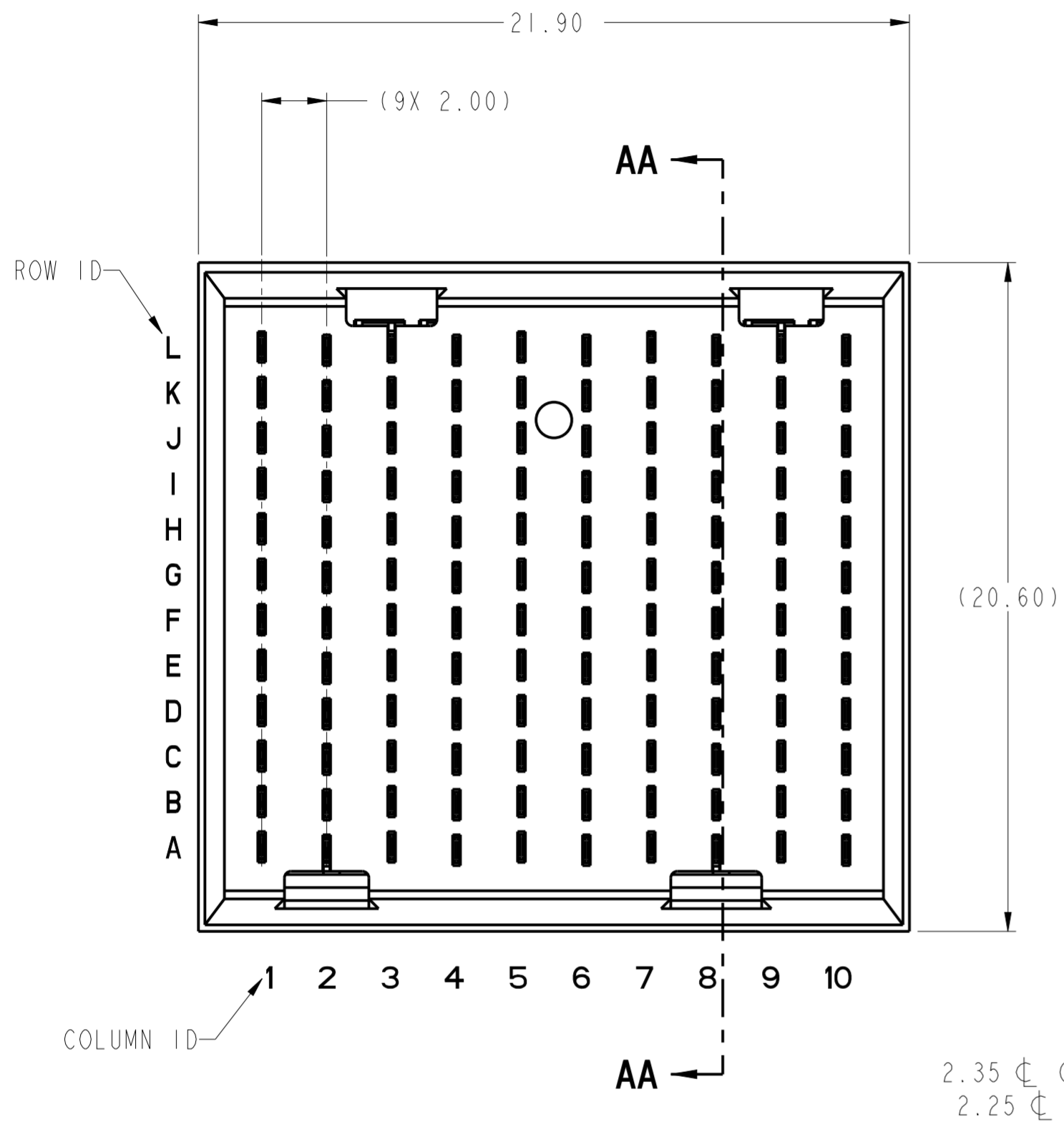
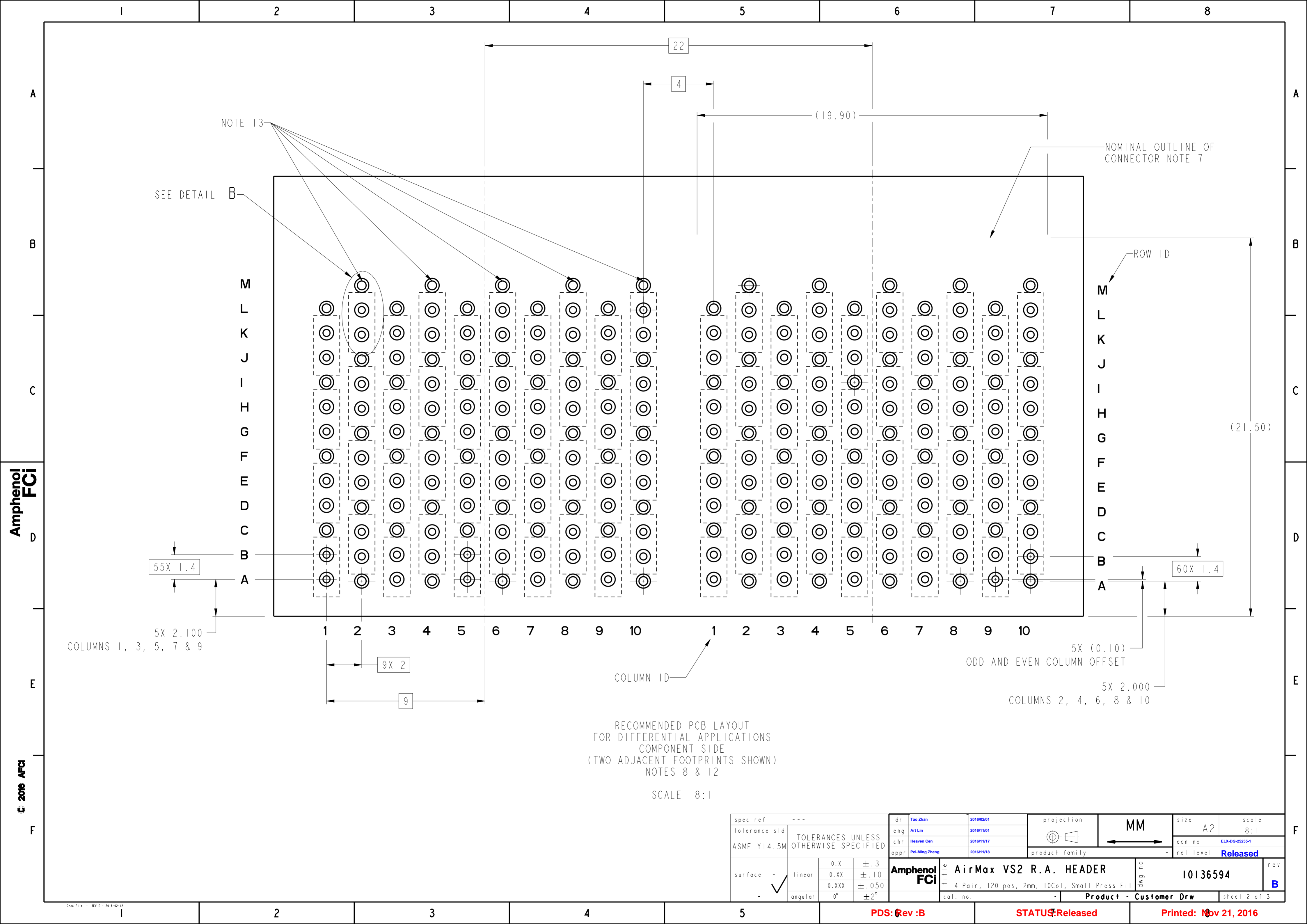


PRODUCT NUMBER
SEE SHEET 3



spec ref	---	dr	Tao Zhan	2016/02/01	projection	MM	size	A2	scale	6:1
tolerance std	ASME Y14.5M	eng	Art Lin	2016/11/01			ecn no	ELX-DG-2525-1	rel level	Released
TOLERANCES UNLESS OTHERWISE SPECIFIED		chr	Heaven Cen	2016/11/17						
surface	linear	0.X	±.3	Amphenol FCI	AirMax VS2 R.A. HEADER		cat. no.	10136594	rev	B
		0.XX	±.10		4 Pair, 120 pos, 2mm, 10Col, Small Press Fit					
		0.XXX	±.050							
	angular	0°	±2°							
					Product - Customer Draw		sheet 1 of 3			



NOTE 13

SEE DETAIL B

NOMINAL OUTLINE OF CONNECTOR NOTE 7

ROW ID

M
L
K
J
I
H
G
F
E
D
C
B
A

M
L
K
J
I
H
G
F
E
D
C
B
A

1

2

3

4

5

6

7

8

9

10

1

2

3

4

5

6

7

8

9

10

55X 1.4

60X 1.4

5X 2.100
COLUMNS 1, 3, 5, 7 & 9

9X 2

9

COLUMN ID

5X (0.10)
ODD AND EVEN COLUMN OFFSET

5X 2.000
COLUMNS 2, 4, 6, 8 & 10

(21.50)

RECOMMENDED PCB LAYOUT
FOR DIFFERENTIAL APPLICATIONS
COMPONENT SIDE
(TWO ADJACENT FOOTPRINTS SHOWN)
NOTES 8 & 12

SCALE 8:1

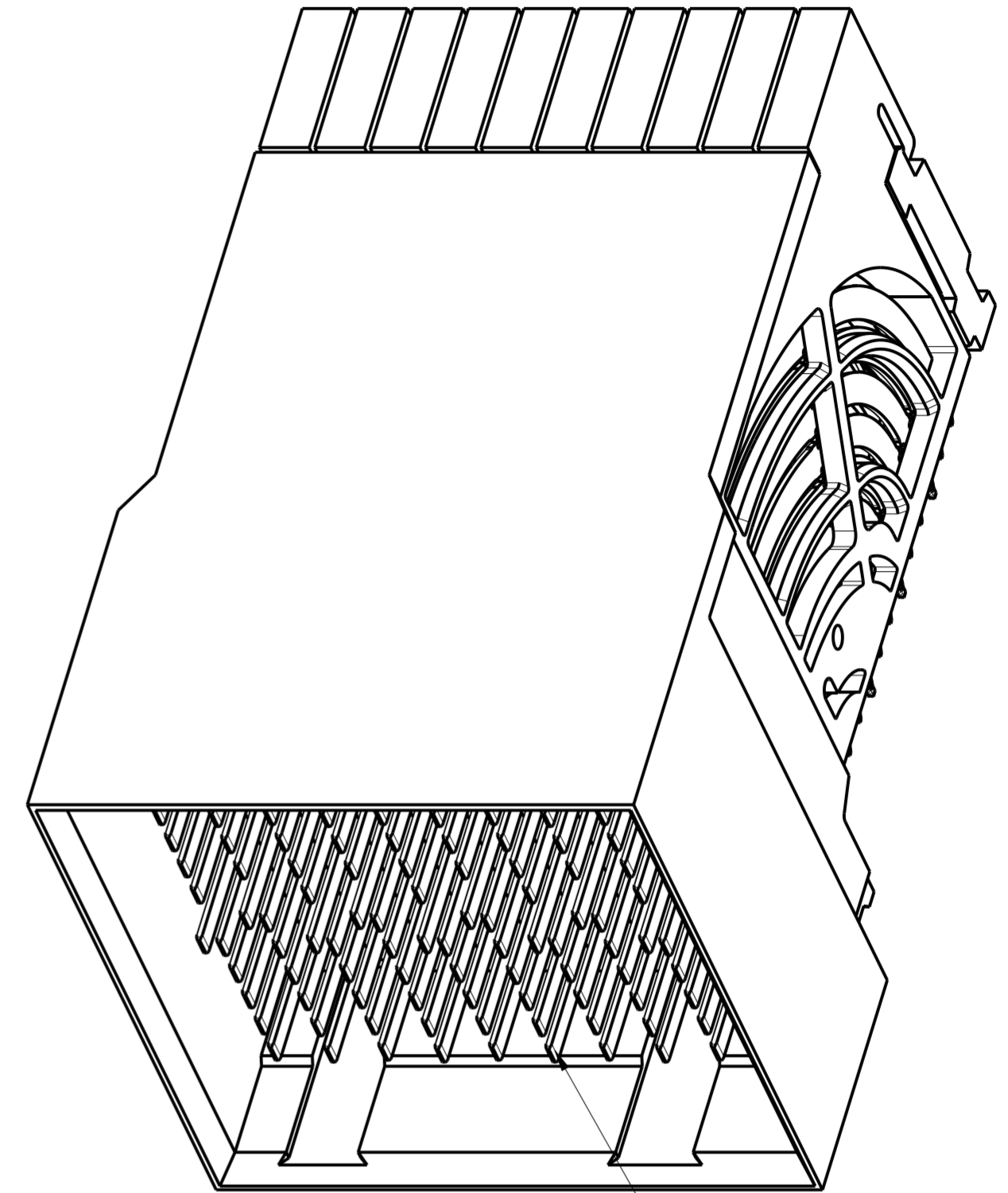
spec ref	---	dr	Tao Zhan	2016/02/01	projection	MM	size	A2	scale	8:1	
tolerance std	ASME Y14.5M	eng	Art Lin	2016/11/01			ecn no	ELX-DG-2525-1	rel level	Released	
TOLERANCES UNLESS OTHERWISE SPECIFIED		chr	Heaven Cen	2016/11/17			product family				
surface	-	appr	Pei-Ming Zheng	2016/11/18	Amphenol FCI		AirMax VS2 R.A. HEADER		4 Pair, 120 pos, 2mm, 10Col, Small Press Fit	dwg no 10136594	rev B
	linear	0.X	±.3		Product - Customer Drw		sheet 2 of 3				
		0.XX	±.10		PDS: Rev :B		STATUS: Released		Printed: Nov 21, 2016		
		0.XXX	±.050								
	angular	0°	±2°								

Amphenol FCI

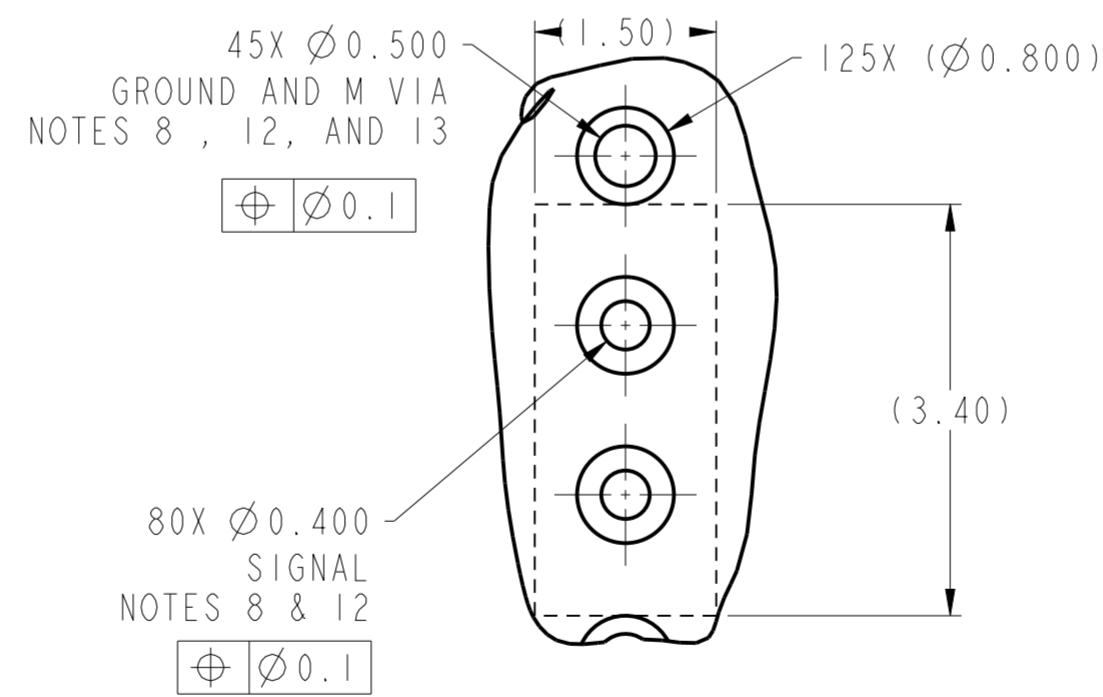
© 2016 APCI

PRODUCT NUMBER	PRESS-FIT TAIL PLATING TYPE	REMARK
10136594-101LF	TIN OVER NICKEL (LEAD FREE)	1-SIDE PLATING (CUSTOMER SPECIAL)
10136594-102LF	TIN OVER NICKEL (LEAD FREE)	2-SIDES PLATING

- 1 - CONNECTOR MATERIALS:
HOUSING: HIGH TEMP THERMOPLASTIC, NATURAL UL94-V0
IMLA PLASTIC: HIGH TEMP THERMOPLASTIC, BLACK, UL94-V0
CONTACT: COPPER ALLOY
ORGANIZER: HIGH TEMP THERMOPLASTIC, NATURAL, UL94-V0
- 2 - CONTACT PLATING:
SEPARABLE INTERFACE:
GXT PLUS PLATING, QUALIFIED TO MEET THE REQUIREMENTS OF FCI PRODUCT SPECIFICATION GS-12-0956 INCLUDING TELCORDIA GR-1217-CORE (NOVEMBER 1995) CENTRAL OFFICE TEST SEQUENCE
- PRESS-FIT TAILS: SEE TABLE
- 3 - PRODUCT SPECIFICATION: GS-12-0956
- 4 - APPLICATION SPECIFICATION: GS-20-0305
- 5 - PRODUCT MARKING, (PROTOTYPE, PART NUMBER & LOT CODE), ON THIS SURFACE.
- 6 - POSITIONS "F" OF ODD NUMBERED COLUMNS AND POSITIONS "G" OF EVEN NUMBERED COLUMNS CORRESPOND TO EARLY MATE HEADER PINS.
- 7 - CONNECTOR OUTLINE MAY BE SCREEN PRINTED ONTO CUSTOMER PCB TO BE USED AS A GUIDE FOR CONNECTOR PLACEMENT.
- 8 - REFER TO CUSTOMER DRAWING 10104444 FOR INFORMATION ON PCB HOLE DIAMETERS AND PLATING OPTIONS
- 9 - LEAD FREE PRODUCT MEETS THE EUROPEAN UNION DIRECTIVES & OTHER COUNTRY REGULATIONS AS DESCRIBED IN GS-22-008
- 10 - A \triangle SYMBOL WILL BE NEXT TO ANY DIMENSION, VIEW OR NOTE, WHICH HAS BEEN MODIFIED WITH THE CURRENT DRAWING REVISION.
- 11 - PACKAGING MEETS GS-14-920 LEAD FREE LABELING SPECIFICATION.
- 12 - GROUND CONTACTS (C, F, I & L IN ODD COLUMNS AND A, D, G & J IN EVEN COLUMNS) REQUIRE ($\varnothing 0.50$) FINISHED HOLES. SIGNAL LOCATIONS REQUIRE ($\varnothing 0.40$) FINISHED HOLES
- 13 - THESE OUTER VIAS (M) ARE OPTIONAL. WHILE NO CONNECTOR PINS ARE PRESSED INTO THESE HOLES WE RECOMMEND ($\varnothing 0.50$) FINISHED HOLES AT THESE LOCATIONS TO PROVIDE GROUND SYMMETRY THROUGH THE PCB.



10136594-101LF



spec ref	---	dr	Tao Zhan	2016/02/01	projection	MM	size	A2	scale	10:1
tolerance std	ASME Y14.5M	eng	Art Lin	2016/11/01			ecn no	ELX-DG-2525-1		
TOLERANCES UNLESS OTHERWISE SPECIFIED		chr	Heaven Cen	2016/11/17			rel level	Released		
surface	linear	0.X	$\pm .3$	appr	Pai-Ming Zheng	2016/11/18	product family			
		0.XX	$\pm .10$	Amphenol FCI		title	AirMax VS2 R.A. HEADER			
		0.XXX	$\pm .050$	4 Pair, 120 pos, 2mm, 10Col, Small Press Fit		dwg no	10136594			
	angular	0°	$\pm 2^\circ$	cat. no.		Product - Customer Drw		sheet 3 of 3		

PDS: Rev :B

STATUS: Released

Printed: Nov 21, 2016