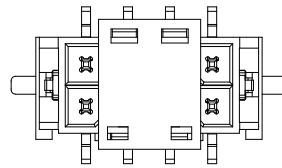
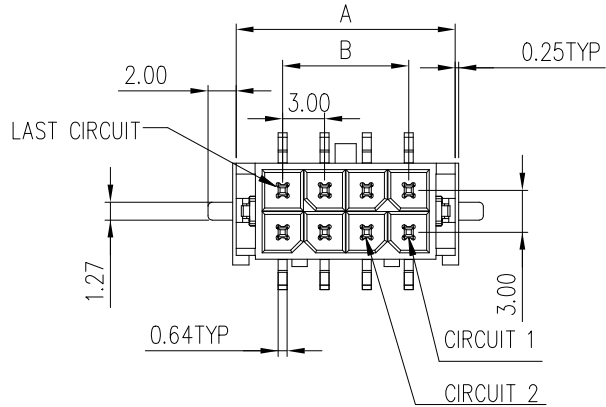
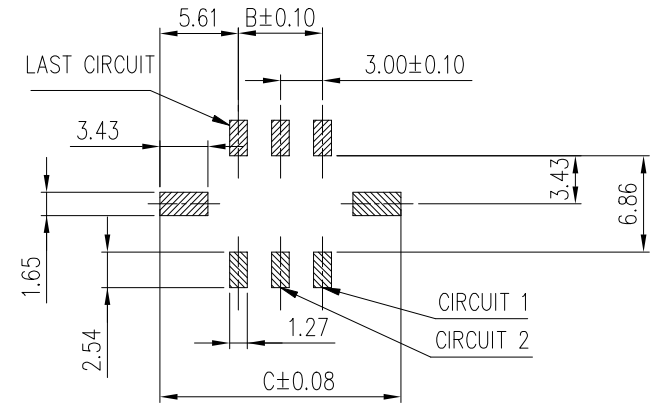


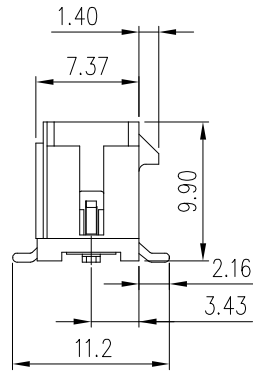
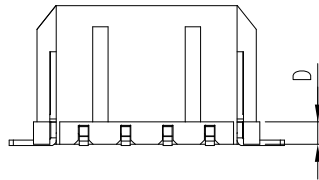
PRODUCT NUMBER  
SEE PART NO. SCHEME



SHOWN WITH DISPOSABLE CAP



RECOMMENDED PCB LAYOUT  
GENERAL TOLERANCE: ±0.05  
PCB THICKNESS=1.60MM



DIMENSION TABLE

POS	A	B	C	D
02	6.65	NA	11.20	6.74
04	9.65	3.00	14.20	
06	12.65	6.00	17.20	1.60
08	15.65	9.00	20.20	
10	18.65	12.00	23.20	
12	21.65	15.00	26.20	
14	24.65	18.00	29.20	
16	27.65	21.00	32.20	
18	30.65	24.00	35.20	
20	33.65	27.00	38.20	
22	36.65	30.00	41.20	
24	39.65	33.00	44.20	

PART NUMBER SCHEME:  
10137926-XX X X X LF

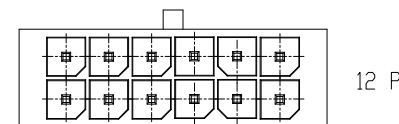
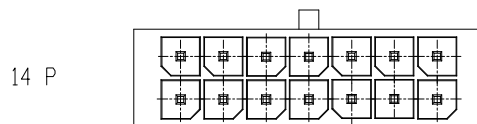
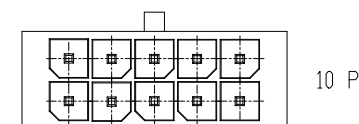
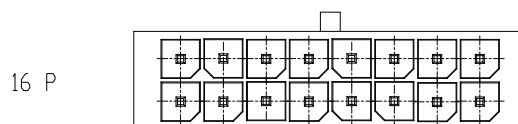
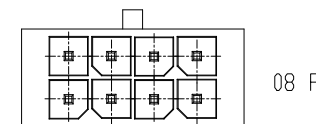
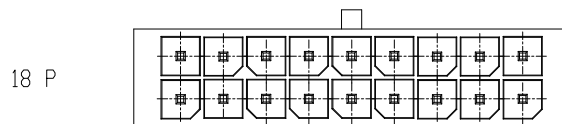
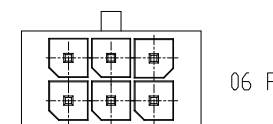
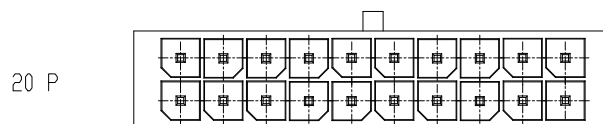
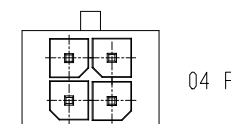
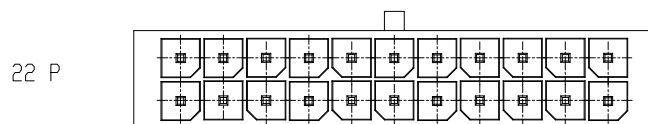
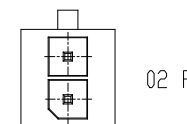
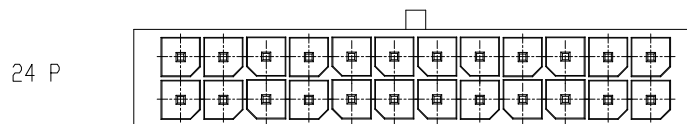
NO OF POS.  
02: 2 POS.  
S  
24: 24 POS.

- PACKAGE  
BLANK: TAPE&REEL WITH PICK UP CAP  
1: TAPE&REEL WITHOUT PICK UP CAP
- HSG MATERIAL  
1: LCP, GLOW WIRE COMPATIBLE, BLACK  
2: LCP, NON GLOW WIRE COMPATIBLE, BLACK  
3: LCP, GLOW WIRE COMPATIBLE, NATURAL  
4: LCP, NON GLOW WIRE COMPATIBLE, NATURAL
- CONTACT PLATING  
1: TIN  
2: GOLD FLASH  
3: 15u" Au, TIN ON SOLDER TAILS  
4: 30u" Au, TIN ON SOLDER TAILS

NOTES:

- MATERIALS:  
HOUSING: OPTIONAL, UL94V-0, HALOGEN FREE.  
TERMINAL: COPPER ALLOY  
HOLD DOWN: COPPER ALLOY
- FINISH:  
TERMINAL: OPTIONAL  
HOLD DOWN: MATTE TIN  
UNDER PLATING: NICKEL OVERALL
- PRODUCT SPECIFICATION: GS-12-1177
- PACKAGE SPECIFICATION: GS-14-2359
- THIS PART MATES WITH FCI RECEPTACLE WIRE CONNECTOR 10127716.
- THIS PART IS APPLICABLE FOR REFLOW PROCESS WITH 260°C PEAK TEMPERATURE FOR 10 SECONDS.

mat'l. code		surface	tolerance	projection	product family	
ltr		ecn no	dr	date	MINITEK PWR3.0	
A		ELX-T-24935	TAI	2015-11-30	title MINITEK PWR3.0 VT HEADER, DUAL ROW SMT TAILS AND HOLD DOWN	
B		ELX-N-27136	TONY	2017-06-02		
C		ELX-N-29278	TONY	2018-02-05	scale N.T.S.	
D		ELX-N-28649	TONY	2017-11-30		
E		ELX-N-29278	TONY	2018-02-05	Amphenol FCI	
sheet index		revision	E	E		dwg no
1		sheet	1	2		sheet 1 of 2
					size	
					A4	
					type	
					Product Customer Drawing	
					10137926	



A

A

B

B

mat'l. code		surface <input checked="" type="checkbox"/> tolerance		projection		product family MINITEK PWR3.0	
ltr	ecn no	dr	date	tolerances unless otherwise specified		title	
				angles	linear	MINITEK PWR3.0 VT HEADER, DUAL ROW	
					X.X ±0.3	SMT TAILS AND HOLD DOWN	
				X.XX ±0.2		scale N.T.S.	
		dr	KENNY TAI	2015-11-26	dwg no		sheet 2 of 2
		enr	KENNY TAI	2015-11-26	10137926		A4
		chr	KENNY TAI	2015-11-26	type		Product Customer Drawing
		appd	PM ZHENG	2015-11-26			
sheet index	revision sheet	E	E	1	2		