



PRODUCT NUMBER

10142802-0XXLF

NOTES:

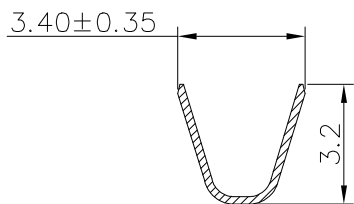
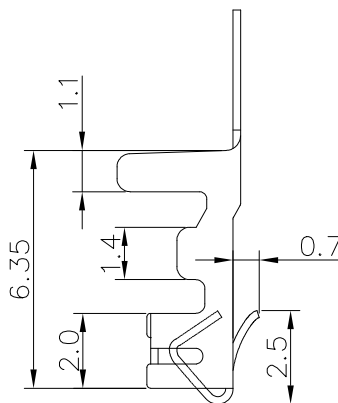
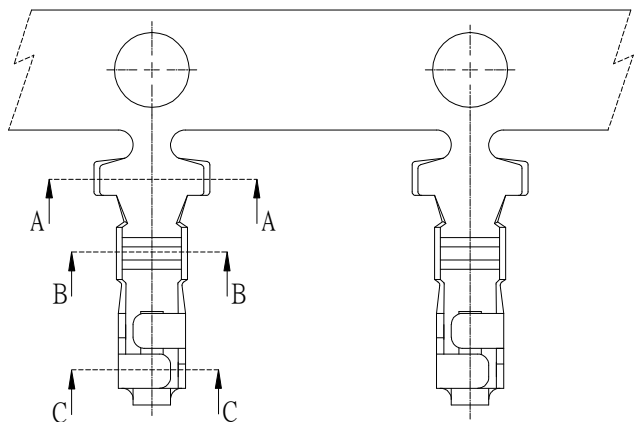
- MATERIAL: 0.20mm THICK COPPER ALLOY
- FINISH:
15U" NICKEL UNDER PLATING
60U" TIN ON SOLDER TAIL
- APPLICABLE WIRES: AWG#20-#28
- INSULATION O.D.: MAX 1.40mm
- RoHS COMPLIANT
- THIS TERMINAL IS USED WITH FCI HSG:10142801
- PRODUCT SPEC: GS-12-1407.
- PACKING SPEC: GS-14-2573.
- PART NUMBER SCHEME:
10142802- 0 X X LF

FINISH:

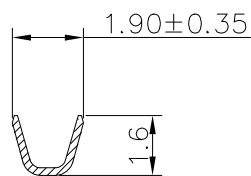
- PRE-MATTE TIN PLATED
- POST-MATTE TIN PLATED
- PRE-BRIGHT TIN PLATED
- POST-BRIGHT TIN PLATED
- GOLD PLATED

Material:

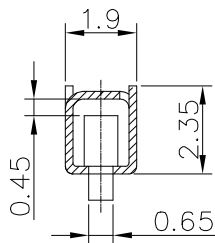
- BRASS
- PHOSPHOR BRONZE



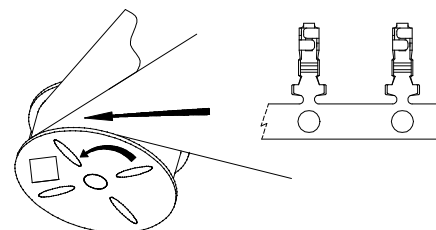
SEC A-A



SEC B-B



SEC C-C



RAW INTO DIRECTION

mat'l. code				surface	tolerance	projection	product family		
ltr				tolerances unless otherwise specified		mm	WTB		
ecn no				angles			title		
dr				linear		N.T.S.	2.5mm Pitch Crimp Terminal		
date				0°±5°			scale		
TONY				.X±0.30		dwg no			
2017-02-16				.XX±0.20		sheet 1 of 1			
				.XXX±0.10		size			
				dr		Amphenol			
				TONY_LENG		FCI			
				2017-02-16		10142802			
				enr		A4			
				TONY_LENG		type			
				2017-02-16		Product Customer Drawing			
				chr					
				ZK_HU					
				2017-02-16					
				appd					
				TIM_YAO					
				2017-02-16					
sheet index		revision		A					
sheet		1							