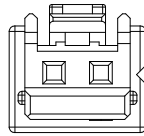
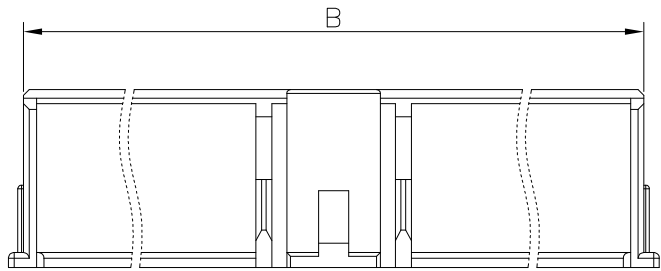
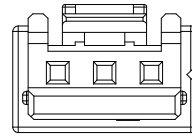


PRODUCT NUMBER  
SEE PART NO. TABLE



2P



3P

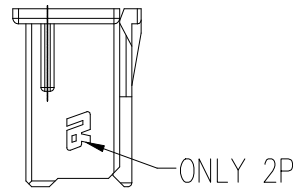
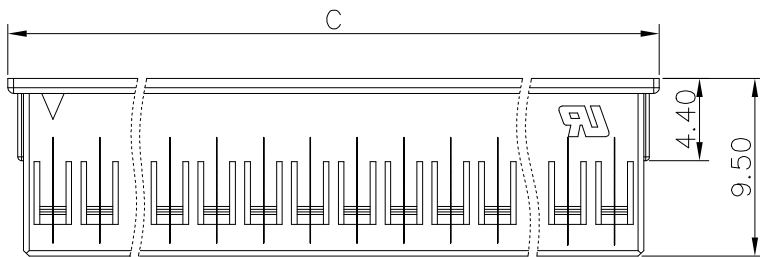
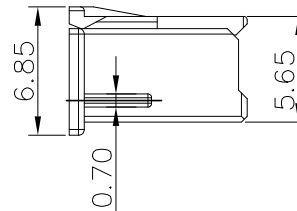
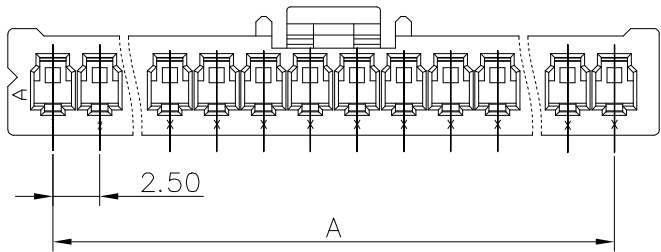
NOTES:

1. MATERIAL: NYLON 66, UL 94V-0.
2. THIS HSG IS USED WITH FCI CRIMP TERMINAL 10142959.
3. THIS RECEPTACLE MATES WITH FCI PLUG 10142994.
4. PRODUCT SPECIFICATION: GS-12-1408.
5. PACKAGE SPECIFICATION: GS-14-2573.
6. PART NUMBER SCHEME:  
10142958- XX 0 XX LF

COLOR CODE:

- 00: NATURAL
- 01: BLACK
- 02: BROWN
- 03: RED
- 04: ORANGE
- 05: YELLOW
- 06: GREEN
- 07: BLUE
- 08: PURPLE
- 09: GREY
- 10: WHITE
- 11: MILKY YELLOW
- 12: BRICK RED
- 13: MILKY WHITE

PIN COUNTS: 02~20



POS	A	B	C	POS	A	B	C
2	2.5	5.64	7.3	12	27.5	30.64	32.3
3	5.0	8.14	9.8	13	30.0	33.14	34.8
4	7.5	10.64	12.3	14	32.5	35.64	37.3
5	10.0	13.14	14.8	15	35.0	38.14	39.8
6	12.5	15.64	17.3	16	37.5	40.64	42.3
7	15.0	18.14	19.8	17	40.0	43.14	44.8
8	17.5	20.64	22.3	18	42.5	45.64	47.3
9	20.0	23.14	24.8	19	45.0	48.14	49.8
10	22.5	25.64	27.3	20	47.5	50.64	52.3
11	25.0	28.14	29.8				

mat'l. code		surface <input checked="" type="checkbox"/> tolerance		projection		product family	
ltr		ecn no dr date		tolerances unless otherwise specified		WTB	
A		TONY 2017-03-01		angles		title	
				linear		2.5mm PITCH HOUSING	
				°±5'		mm	
						scale N.T.S.	
		dr TONY_LENG 2017-03-01				dwg no sheet 1 of 1 size	
		enr TONY_LENG 2017-03-01				10142958 A4	
		chr ZK_HU 2017-03-01				type Product Customer Drawing	
		appd TIM_YAO 2017-03-01					
sheet index		revision sheet		A 1			