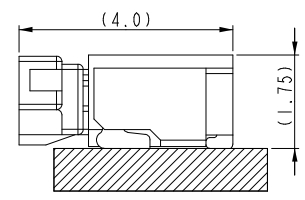
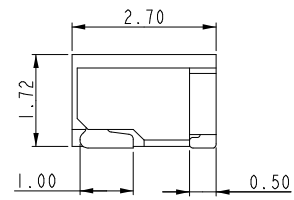
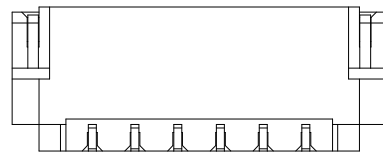
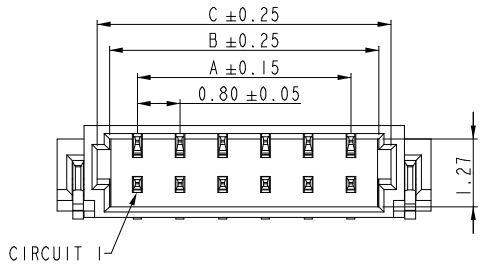
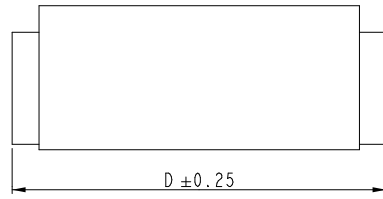
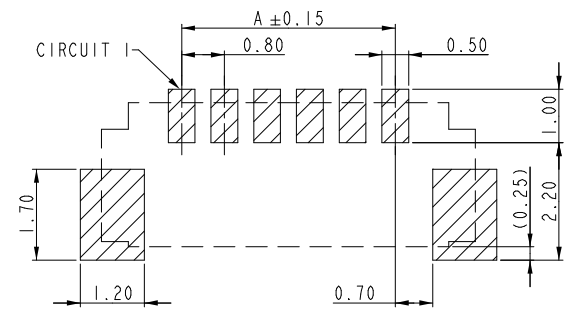


PRODUCT NUMBER
SEE PART NO. TABLE



Mating Condition (REF.)



TOLERANCE: ±0.05
RECOMMENDED P.C.B. Layout
TOP VIEW

PIN	DIM. (mm)				PIN	DIM. (mm)			
	A	B	C	D		A	B	C	D
02	0.80	1.84	2.30	3.80	11	8.00	9.04	9.50	11.00
03	1.60	2.64	3.10	4.60	12	8.80	9.84	10.30	11.80
04	2.40	3.44	3.90	5.40	14	10.40	11.44	11.90	13.40
05	3.20	4.24	4.70	6.20	15	11.20	12.24	12.70	14.20
06	4.00	5.04	5.50	7.00	16	12.00	13.04	13.50	15.00
07	4.80	5.84	6.30	7.80	17	12.80	13.84	14.30	15.80
08	5.60	6.64	7.10	8.60	20	15.20	16.24	16.70	18.20
09	6.40	7.44	7.90	9.40	22	16.80	17.84	18.30	19.80
10	7.20	8.24	8.70	10.20	24	18.40	19.44	19.90	21.40

NOTES:

- MATERIAL:
INSULATION(HALOGEN FREE): LCP, UL94V-0,GLOW WIRE COMPATIBLE
CONTACT: COPPER ALLOY, t=0.15
- MATE WITH RECEPTACLE: AFCI 10145492
- THE INSULATION CAN WITHSTAND IR REFLOW 260°C FOR 10 SECONDS
- PRODUCT SPEC: GS-12-1444
- PACKAGING SPEC: GS-14-2616
- ORDERING CODE: 10144041-XX X X L F

NO. OF PINS
02~24 PIN

PACKAGE
1: TAPE & REEL

INSULATION COLOR
0: CREAM
1: BLACK

CONTACT FINISH
1: TIN PLATED OVER NICKEL
2: GOLD FLASH OVER NICKEL

mat'l. code		surface	tolerance	projection	product family	
ISO 1302		ISO 406	ISO 1101	MINITEK		
ltr	ecn no	dr	date	title		
tolerances unless otherwise specified				0.8mm Pitch RA Header SMT		
angles		linear		mm		
0°±x'		.X±.25 .XX±.15 .XXX±.08		scale 1:1		
dr	TONY LENG	2017-05-22		dwg no		
engr	TONY LENG	2017-05-22		sheet 1 of 1		
chr	ZK HU	2017-05-22		size		
appd	TIM YAO	2017-05-22		A3		
sheet index				revision		
sheet 1				A		

