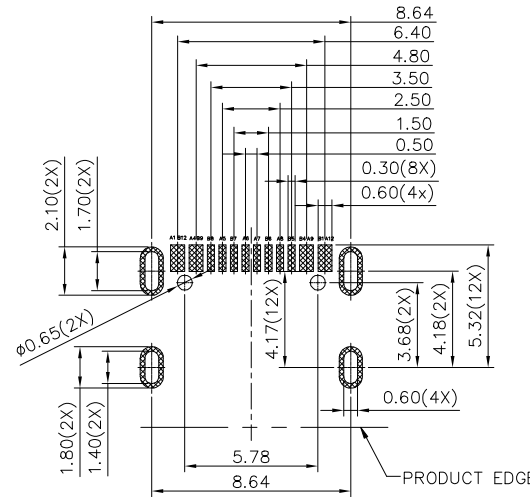
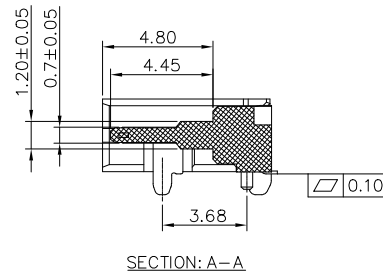
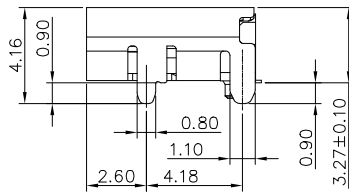
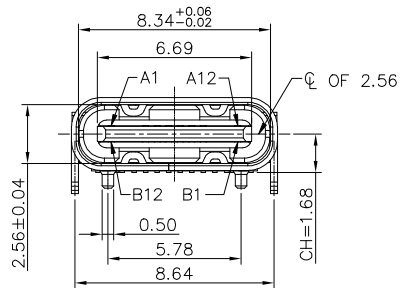


USB TYPE-C PIN ASSIGNMENTS

PIN NUMBER	SIGNAL NAME	PIN NUMBER	SIGNAL NAME
A1	GND	B12	GND
A4	VBUS	B9	VBUS
A5	CC1	B8	SBU2
A6	Dp1	B7	Dn2
A7	Dn1	B6	Dp2
A8	SBU1	B5	CC2
A9	VBUS	B4	VBUS
A12	GND	B1	GND

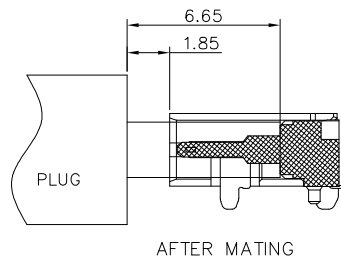
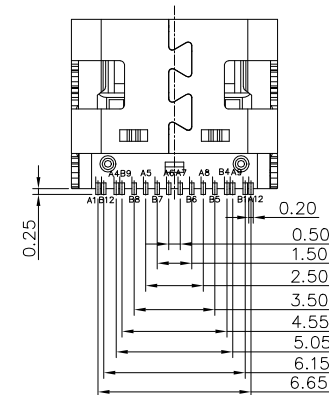


RECOMMENDED PCB LAYOUT(TOP VIEW)
THICKNESS 0.80MM;DEFAULT TOLERANCE:±0.05

- NOTE:
- MECHANICAL PERFORMANCE,
 - INSERTION FORCE: 0.5~2.0kgf.
 - REMOVAL FORCE: 0.8kgf~2.0kgf.
 - DURABILITY: 10000 CYCLES.
 - ELECTRICAL PERFORMANCE,
 - CURRENT RATING: 5.0A(CONTACT MATERIAL IS C1814)
3.0A(CONTACT MATERIAL IS SPECIAL MATERIALS)
VOLTAGE RATING: 5.0V
 - LLCR: VBUS & GND PINS AND OTHER PINS: 40mΩ/PIN MAX.
SHIELD: 50mΩ/MAX.
LLCR MAX. CHANGE OF ALL PINS: 10mΩ
 - INSULATION RESISTANCE: 100MΩ MIN
 - DIELECTRIC WITHSTAND VOLTAGE,AC 100V FOR 1 MINUTE.
 - ENVIRONMENTAL PERFORMANCE:
 - OPERATING TEMPERATURE: -25°C~+85°C.
 - IR REFLOW:
 - THE PEAK TEMPERATURE ON THE BOARD SHALL BE MAINTAINED FOR 10 SECONDS AT 260°C.
 - PRODUCT SPECIFICATION: GS-12-1613.

1015435-000 X X LF

- PACKAGING
1. TAPE AND REEL
- CONTACT PLATING
1. GOLD FLASH
2. 30u" Au
3. 15u" Au



mat'l. code				surface	tolerance	projection	product family
				ISO 1302	ISO 406	ISO 1101	HPL 511
ltr	ecn no	dr	date	tolerances unless otherwise specified		mm	title
C	ELX-N-37846-1	YY	2020/07/30	angles	.0±.35	← mm →	USB Type C Female R/A SMT 16Pin
				linear	.00±.25		
				0°±2'	.000±.15	scale 1:1	dwg no
				dr	Yuan-Yuan Bao	2020/07/30	sheet 1 of 1
				eng	Yuan-Yuan Bao	2020/07/30	size
				chr	Li-Qing Lei	2020/07/30	1015435
				appd	Tim Yao	2020/07/30	A3
							type
sheet	revision						Product Customer Drawing
index	sheet						

© 2016 AFCI