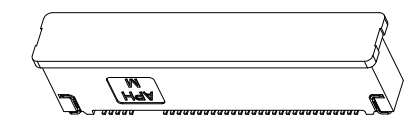
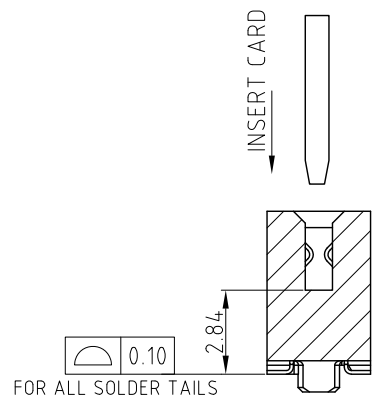
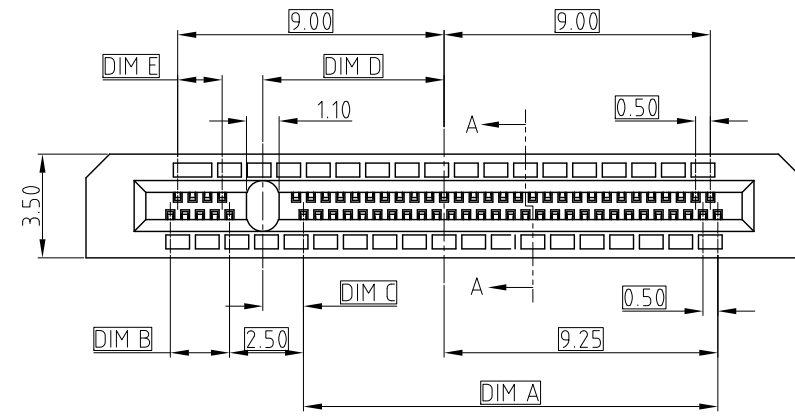


This document is the property of Amphenol Corporation and is delivered on the express condition that it is not to be disclosed, reproduced or used, in whole or in part, for manufacture or sale by anyone other than Amphenol Corporation without its prior consent, & that no right is granted to disclose or to use any information in this document.

CUSTOMER DRAWING

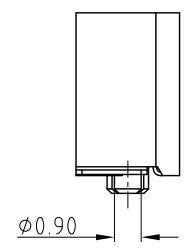
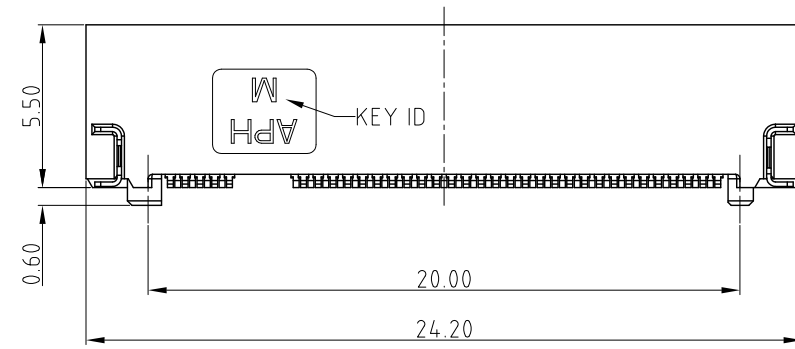
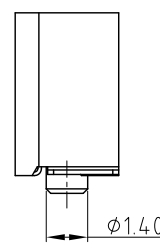
| REVISIONS | | | | |
|-----------|--------|-----------------------|-------------|----------|
| SYM | ECN | DESCRIPTION | DATE | APPROVED |
| 1 | CD0828 | NEW RELEASE | Jul.15,2015 | YH |
| 2 | CD1012 | ADD THE TOOLED STATUS | May.18,2018 | YH |



WITH PICK UP CAP

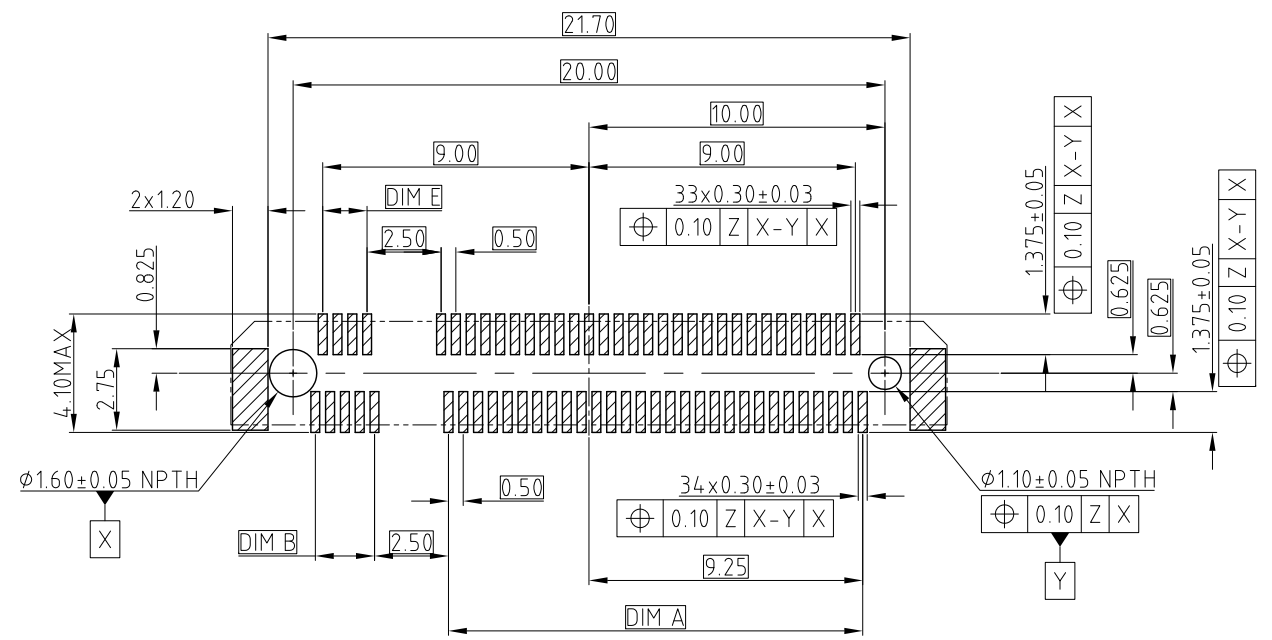


- NOTE:
- MATERIAL:
 PLASTIC: LCP, UL 94V-0, BLACK
 CONTACT: COPPER ALLOY
 BOARD LOCK: ALLOY
 - FINISHED:
 CONTACT AREA: SEE P/N SYSTEM
 SOLDER AREA: GOLD FLASH
 BOARD LOCK: TIN PLATING 2.54um MIN
 UNDERPLATED: NI PLATING 1.27um MIN
 - ELECTRICAL PERFORMANCE:
 3.1 CURRENT RATING: 0.5A PER PIN
 3.2 DIELECTRIC STRENGTH: 300V AC FOR 1 MINUTE
 3.3 INSULATION RESISTANCE: 500MΩ MIN
 3.4 CONTACT RESISTANCE: 55mΩ MAX
 3.5 OPERATION TEMPERATURE: -40°C TO +80°C
 - DIMENSIONING SHALL BE INTERPRETED PER ASME Y14.5M 1994
 - MATERIAL SHOULD BE FULFILLED AMPHENOL SPEC# S-SN-002 FOR HALOGEN FREE PRODUCTS, ALSO NEED TO MEET # S-SN-004



ORDER P/N SYSTEM:
MDT350X0X001VT

| CONNECTOR KEY ID | TOOLED | PLATING |
|------------------|------------|------------------------------|
| A - KEY A | TOOLED | 01 0.76 MICRONS GOLD PLATING |
| B - KEY B | TOOLED | 02 0.38 MICRONS GOLD PLATING |
| E - KEY E | NOT TOOLED | 03 GOLD FLASH |
| M - KEY M | TOOLED | |
| ... | | |



RECOMMENDED PCB OUTLINE
TOLERANCE: ±0.05
DATUM Z: PCB SOLDER SURFACE

| | | | | | | |
|--------|-------|-------|-------|--------|-------|--------|
| M | 14.0 | 2.0 | 1.375 | 6.125 | 1.50 | |
| E | 5.5 | 10.5 | 1.125 | -2.625 | 10.50 | |
| B | 2.5 | 13.5 | | -5.625 | 13.50 | |
| A | 1.5 | 14.5 | | -6.625 | 14.50 | |
| KEY ID | DIM.A | DIM.B | DIM.C | DIM.D | DIM.E | REMARK |

| UNLESS OTHERWISE SPECIFIED TOLERANCES | | APPROVAL | | DATE | |
|---------------------------------------|--------|---------------------|----------|-----------------------------|-------------|
| U.S. | METRIC | DRAWN | Yunx.liu | CHECKED | Ly.yi |
| .X | +/- | | | | May.18,2018 |
| .XX | +/- | | | | May.18,2018 |
| .XXX | +/- | | | | |
| FRACTIONS | +/- | | | | |
| ANGLES | +/- | | | | |
| | | | | | |
| FOR MATERIALS AND FINISHES SEE NOTES | | DRAWING FILE : | | DRAWING\M.2\CMDT350M0X001VT | |
| REMOVE SHARP EDGES | | ANGLE OF PROJECTION | | | |
| DIMENSIONS | | | | | |
| U.S. | INCHES | | | | |
| (METRIC) | (MM) | | | | |

| | | |
|--|------------------|--------------|
| Amphenol | | |
| TITLE VERTICAL M.2 MINI PCIe CONECTOR | | |
| SIZE | DRAWING NO. | REV. |
| A3 | C MDT350X0X001VT | 2 |
| SCALE | NONE | SHEET 1 OF 1 |

D
C
B
A

D
C
B
A