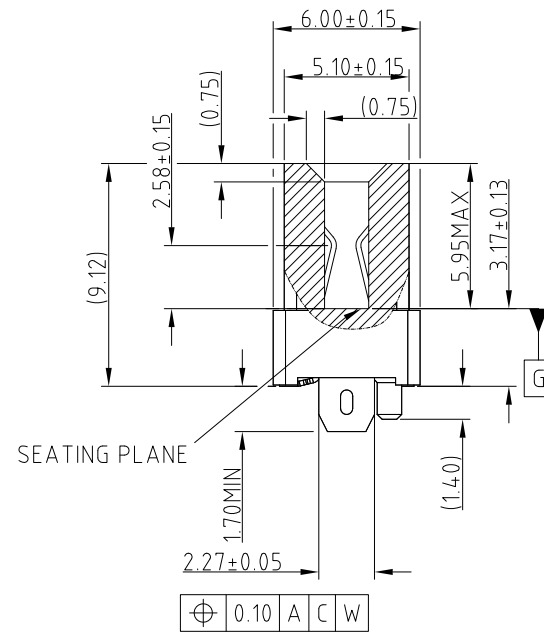
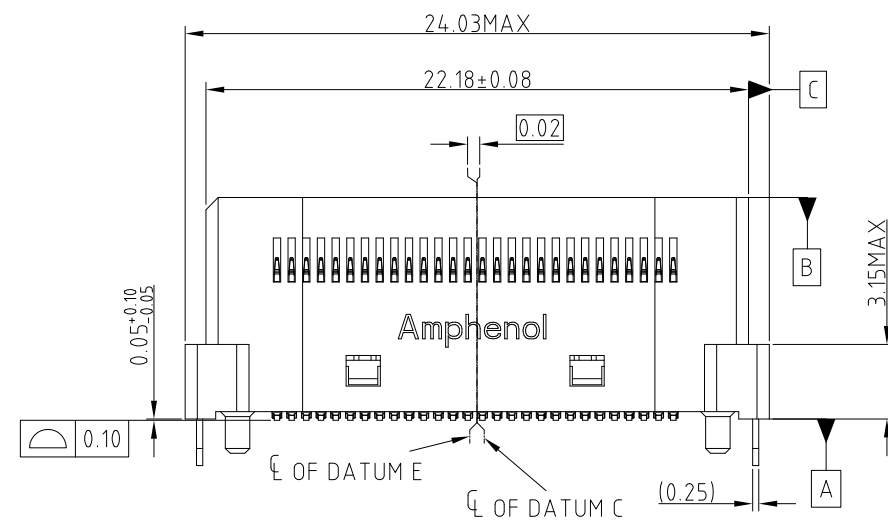
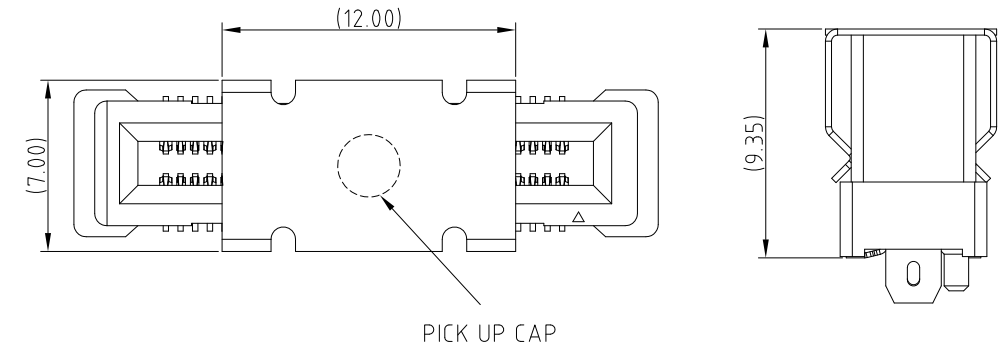
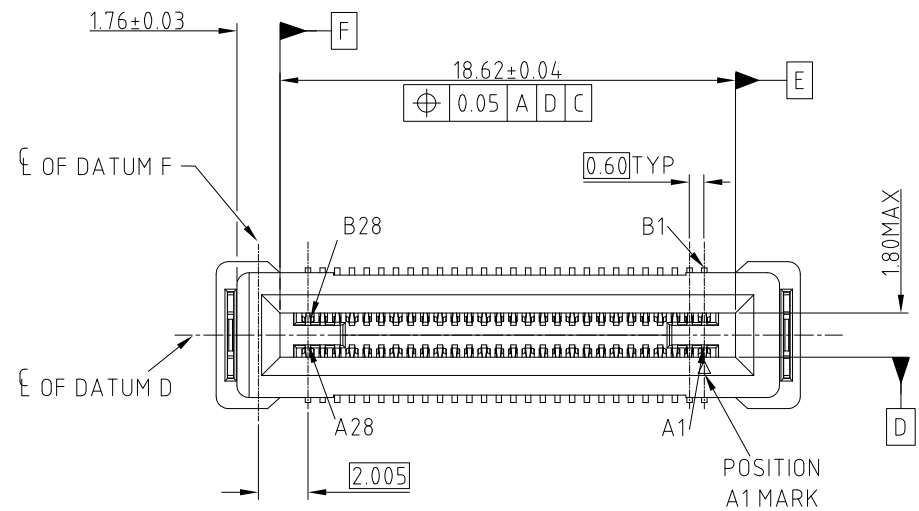


This document is the property of Amphenol Corporation and is delivered on the express condition that it is not to be disclosed, reproduced or used, in whole or in part, for manufacture or sale by anyone other than Amphenol Corporation without its prior consent, & that no right is granted to disclose or to use any information in this document.

# CUSTOMER DRAWING

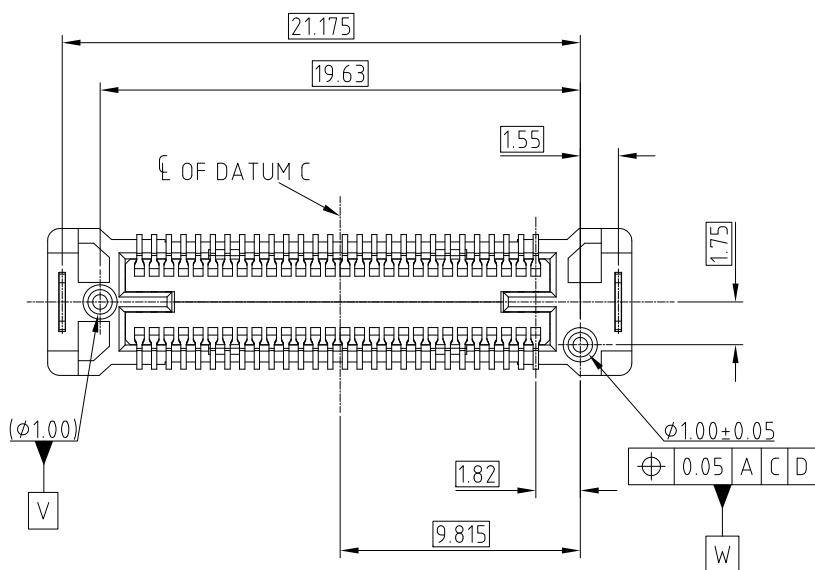
REVISIONS				
SYM	ECN	DESCRIPTION	DATE	APPROVED
4	CDXXXX	PRELIMINARY PROPOSAL(FOLLOW GEN Z V0.9E)	Nov.10,2017	
5	CDXXXX	ADD AIC CARD RECOMMEND SPECIFICATION	May.21,2018	
6	CDXXXX	ADD PICK UP CAP	Aug.14,2018	
7	CDXXXX	UPDATED BY SFF TA 1002 V1.1.3	Nov.05,2018	



**NOTE:**

- MATERIAL:**  
HOUSING: HIGH TEMPERATURE THERMOPLASTIC BLACK UL94-V0  
CONTACT: COPPER ALLOY  
BOARDLOCK: COPPER ALLOY
- PLATING:**  
CONTACT: MATING AREA: SEE PLATING SEPC OVER 1.27-2.54 UM NICKEL UNDERPLATED  
SOLDER AREA: 1.27 MIN TIN OVER 1.27-2.54 UM NICKEL UNDERPLATED  
BOARDLOCK: 1.27 MIN TIN OVER 1.27-2.54UM NICKEL UNDERPLATED
- ELECTRICAL PERFORMANCE:**  
RATED CURRENT : 1.1A/PIN UP TO 12PINS  
LLCR:30mΩ MAX, DELTA 15 mΩ.  
INSULATION RESISTANCE: 1000MΩ MIN
- DURABILITY:200 CYCLES.**
- MATERIAL SHOULD BE FULFILLED AMPHEONL SPEC# S-SN-002 AND S-SN-004.**
- ORDERING PN SYSTEM:ME100561010101X**

- PLATING SPEC
- 0.76um Au
  - 0.38um Au
  - GOLD FLASH
  - PdNi 0.76um +GF



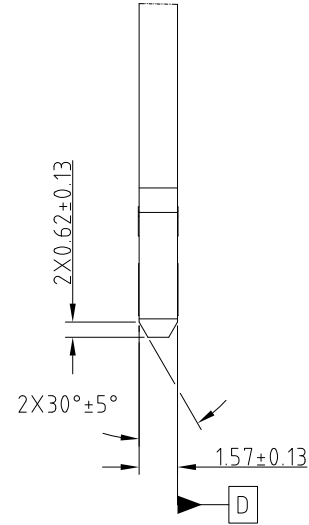
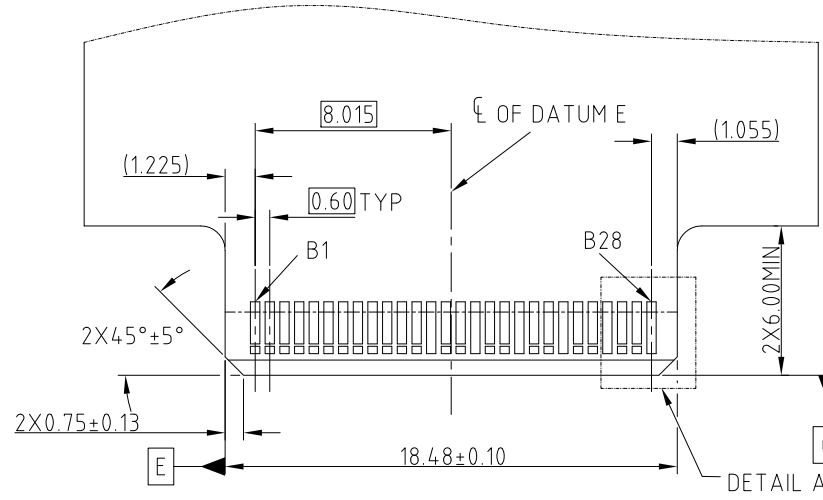
## PROPOSAL DRAWING

UNLESS OTHERWISE SPECIFIED TOLERANCES		APPROVAL		DATE		Amphenol	
U.S. METRIC		DRAWN	Rocky	Nov.05,2018			
.X +/-	0.25	CHECKED	Ly.Yi	Nov.05,2018			
.XX +/-	0.20	APPROVED				TITLE	
.XXX +/-	0.15					MINI COOL EDGE CONNECTOR	
FRACTIONS +/-	5°	DRAWING FILE :				56P V/T 0.6MM PITCH SMT	
ANGLES +/-		INTERNAL\DRAWING\ME\ C ME100561010101X				SIZE	
FOR MATERIALS AND FINISHES SEE NOTES		REMOVE SHARP EDGES		ANGLE OF PROJECTION		DRAWING NO.	
						A3	
DIMENSIONS		—U.S.—		INCHES		REV.	
(METRIC)		(mm)				7	
		SCALE		NONE		SHEET 1 OF 2	

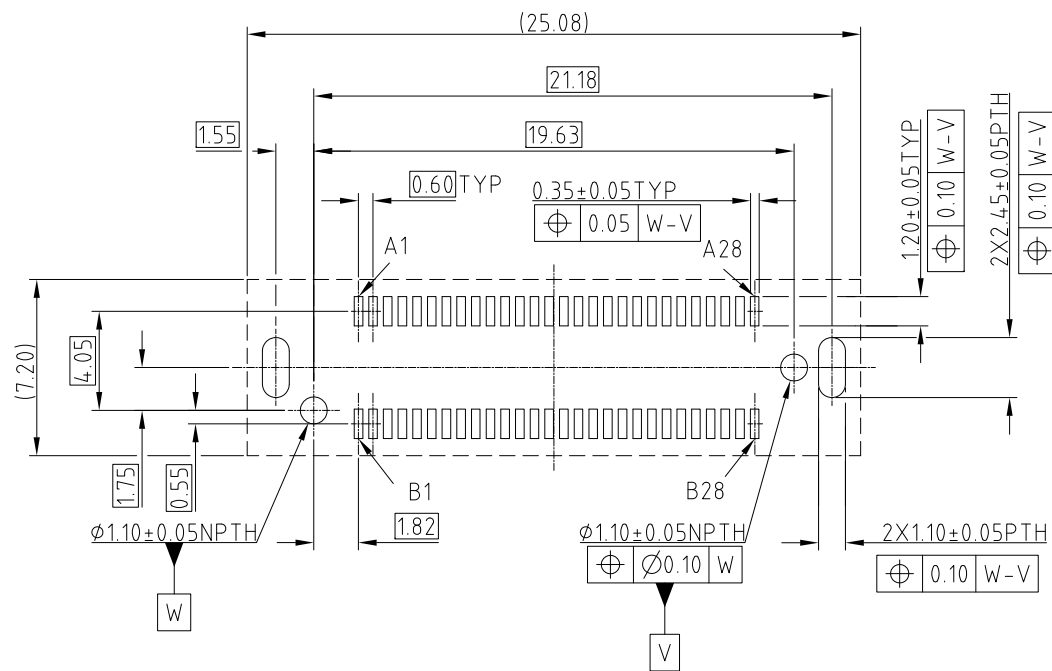
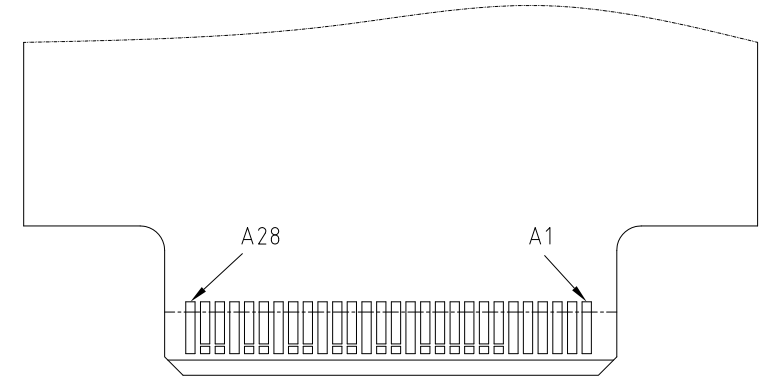
This document is the property of Amphenol Corporation and is delivered on the express condition that it is not to be disclosed, reproduced or used, in whole or in part, for manufacture or sale by anyone other than Amphenol Corporation without its prior consent, & that no right is granted to disclose or to use any information in this document.

CUSTOMER DRAWING

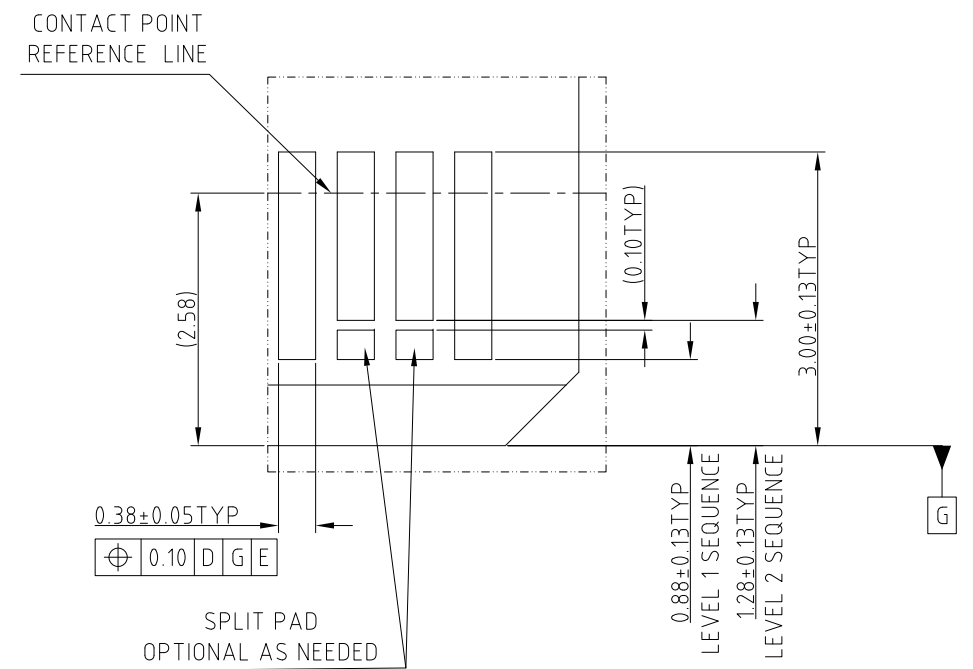
REVISIONS				
SYM	ECN	DESCRIPTION	DATE	APPROVED
		SEE SHEET 1		



RECOMMENDED AIC MATING CARD



RECOMMENDED FOOTPRINT



DETAIL A  
SCALE 4:1

PROPOSAL DRAWING

UNLESS OTHERWISE SPECIFIED TOLERANCES		APPROVAL	DATE	Amphenol	
U.S. METRIC		DRAWN Rocky	Oct.22,2018		
.X +/- 0.25		CHECKED Ly.Yi	Nov.05,2018		
.XX +/- 0.20		APPROVED		TITLE	
.XXX +/- 0.15		DRAWING FILE :		MINI COOL EDGE CONNECTOR	
FRACTIONS +/- 5°		INTERNAL\DRAWING\ME\ C ME100561010101X		56P V/T 0.6MM PITCH SMT	
ANGLES +/-		ANGLE OF PROJECTION		SIZE	DRAWING NO.
FOR MATERIALS AND FINISHES SEE NOTES		REMOVE SHARP EDGES		A3	C ME100561010101X
DIMENSIONS		DIMENSIONS		SCALE	REV.
—U.S.—	INCHES	NONE		SCALE	NONE
(METRIC)	(mm)	SHEET 2 OF 2			