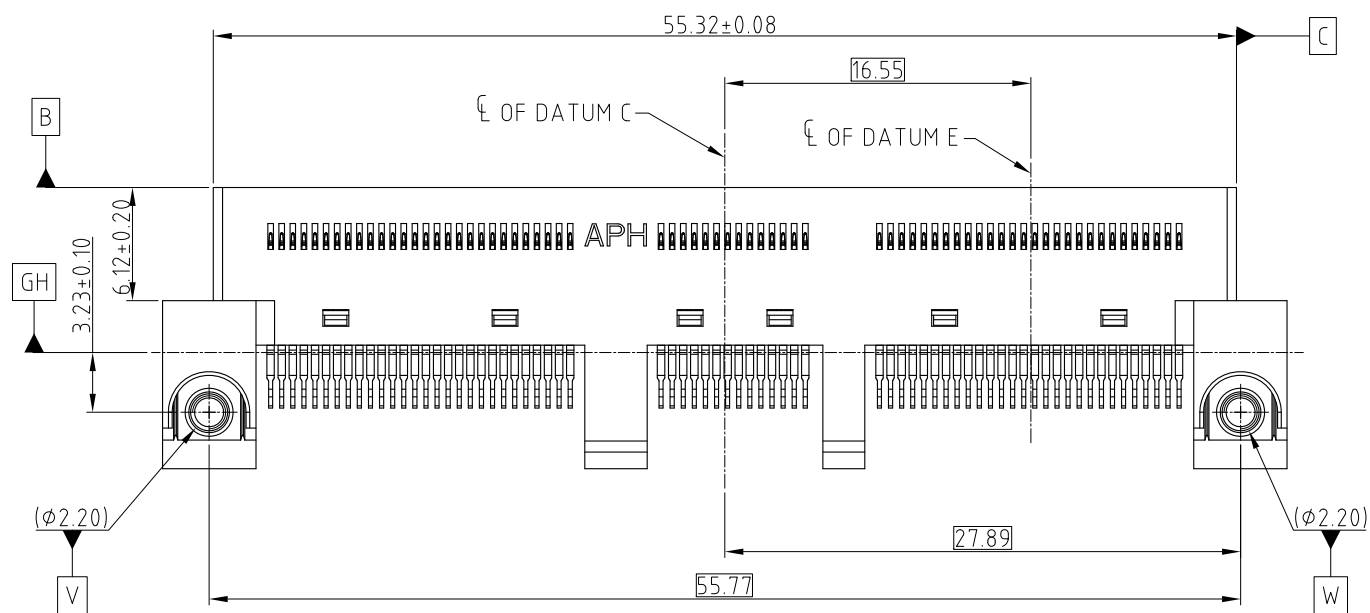
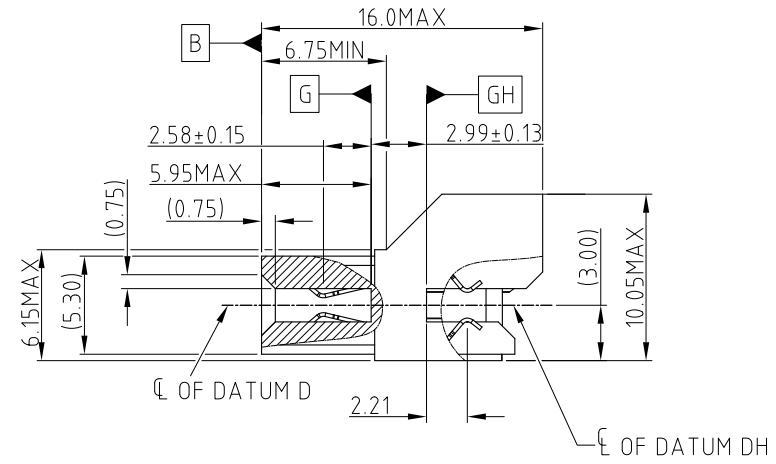
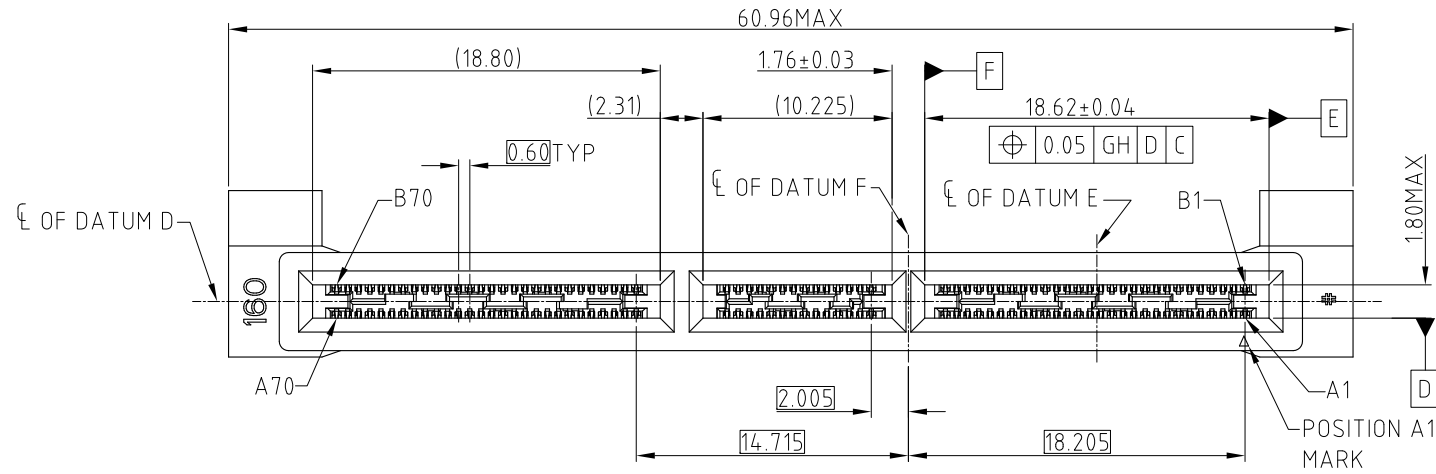


This document is the property of Amphenol Corporation and is delivered on the express condition that it is not to be disclosed, reproduced or used, in whole or in part, for manufacture or sale by anyone other than Amphenol Corporation without its prior consent, & that no right is granted to disclose or to use any information in this document.

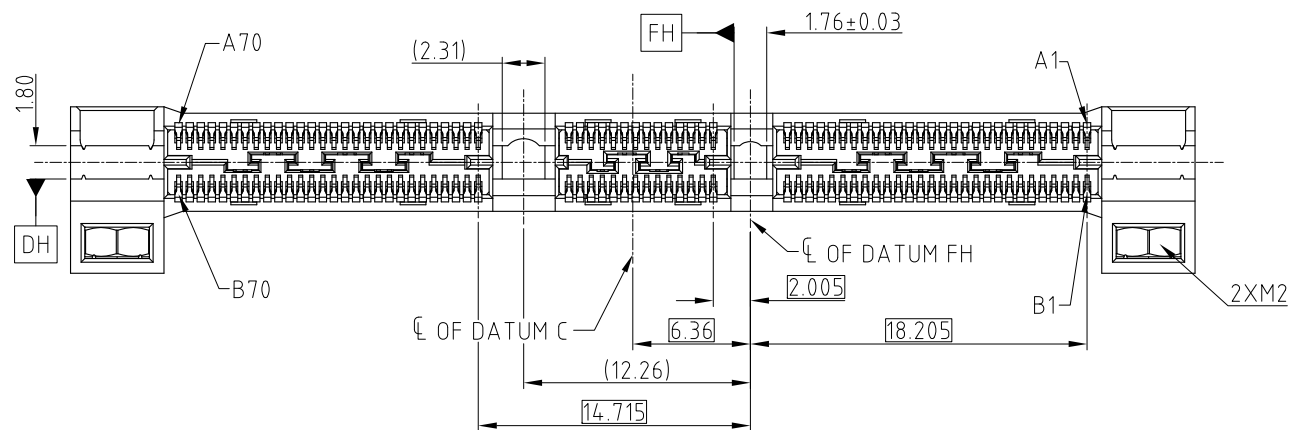
CUSTOMER DRAWING

REVISIONS				
SYM	ECN	DESCRIPTION	DATE	APPROVED
1	CDXXXX	PRELIMINARY PROPOSAL	Aug.17,2018	YH
2	CDXXXX	UPDATED BY SFF TA 1002 REV 1.1.3	Oct.31,2018	YH



- NOTE:
- MATERIAL:
HOUSING: HIGH TEMPERATURE THERMOPLASTIC BLACK UL94-V0
CONTACT: COPPER ALLOY
NUT: STAINLESS STEEL
 - PLATING:
CONTACT: MATING AREA: Au THICKNESS PLEASE REFER TO P/N SYSTEM
OVER 1.27-2.54 μm NICKEL UNDERPLATED
SOLDER AREA: 1.27 μm MIN TIN OVER 1.27-2.54 μm NICKEL UNDERPLATED
 - ELECTRICAL PERFORMANCE:
RATED CURRENT: 1.1A/PIN UP TO 12PINS
LLCR: 30mΩ MAX, DELTA 15 mΩ.
INSULATION RESISTANCE: 1000MΩ MIN
 - DURABILITY: 200 CYCLES.
 - MATERIAL SHOULD BE FULFILLED AMPHENOL SPEC# S-SN-002 AND S-SN-004
 - ORDERING PN SYSTEM : ME101401340110X

- PLATING SPEC
- 0.76um Au
 - 0.38um Au
 - GOLD FLASH
 - PdNi 0.76um+G/F



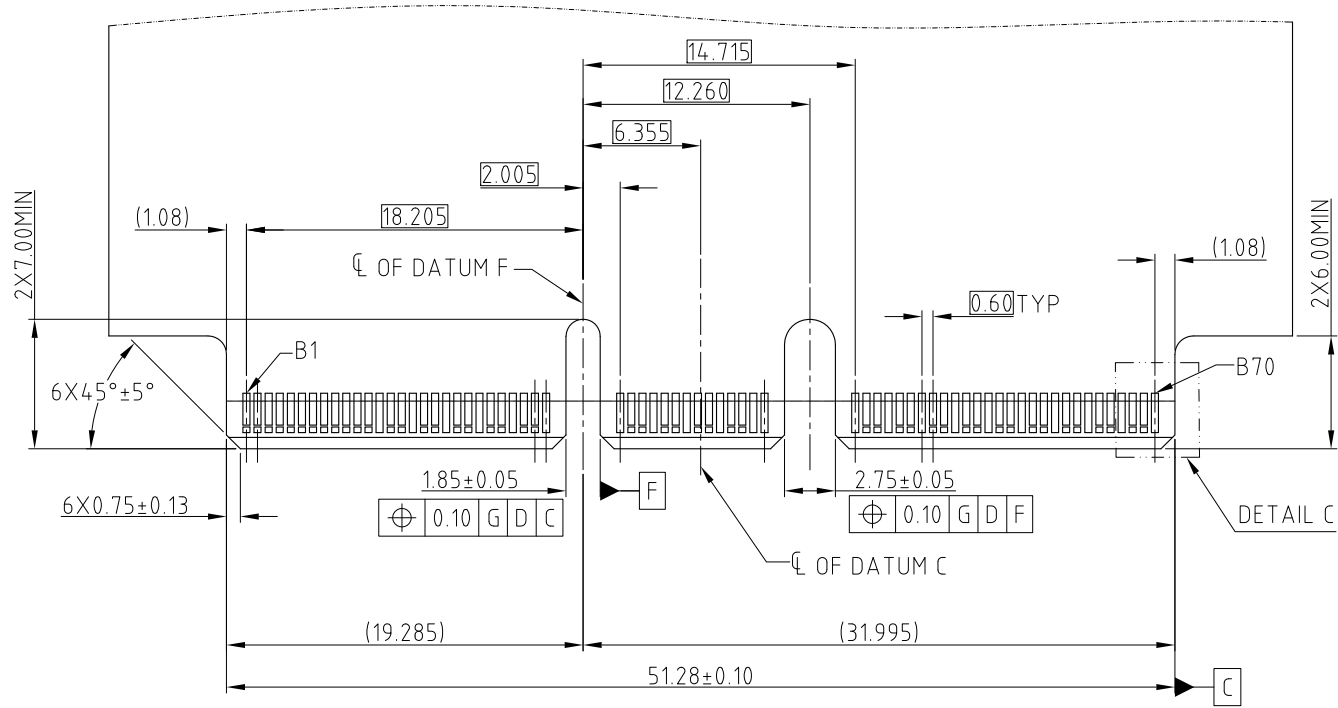
PROPOSAL DRAWING

UNLESS OTHERWISE SPECIFIED TOLERANCES U.S. METRIC .X +/- 0.25 .XX +/- 0.20 .XXX +/- 0.15 FRACTIONS +/- ANGLES +/- 5° FOR MATERIALS AND FINISHES SEE NOTES	APPROVAL	DATE	Amphenol
	DRAWN Teng.Cao	Nov.08,2018	
	CHECKED Ly.Yi	Nov.08,2018	
REMOVE SHARP EDGES	APPROVED		TITLE MINI COOL EDGE CONNECTOR 140P S/M MATE 1.57 HOST PCB
DIMENSIONS	DRAWING FILE : INTERNAL\ME\C ME101401340110X	ANGLE OF PROJECTION	
—U.S.— INCHES (METRIC) (mm)			DRAWING NO. C ME101401340110X
			REV. 2
			SCALE NONE SHEET 1 OF 2

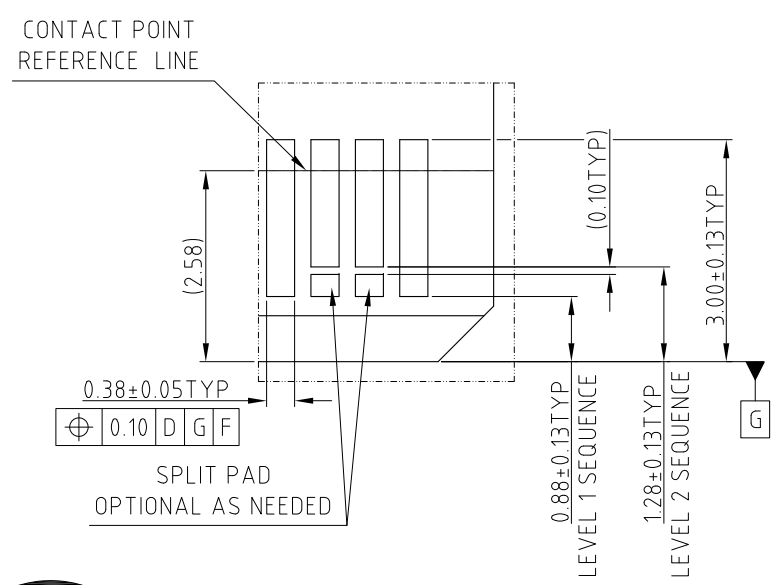
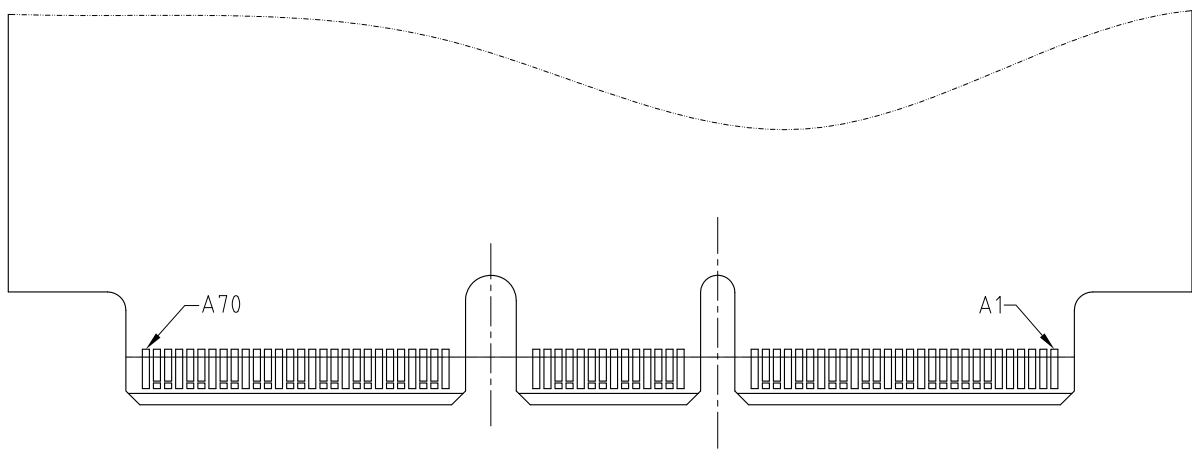
This document is the property of Amphenol Corporation and is delivered on the express condition that it is not to be disclosed, reproduced or used, in whole or in part, for manufacture or sale by anyone other than Amphenol Corporation without its prior consent, & that no right is granted to disclose or to use any information in this document.

CUSTOMER DRAWING

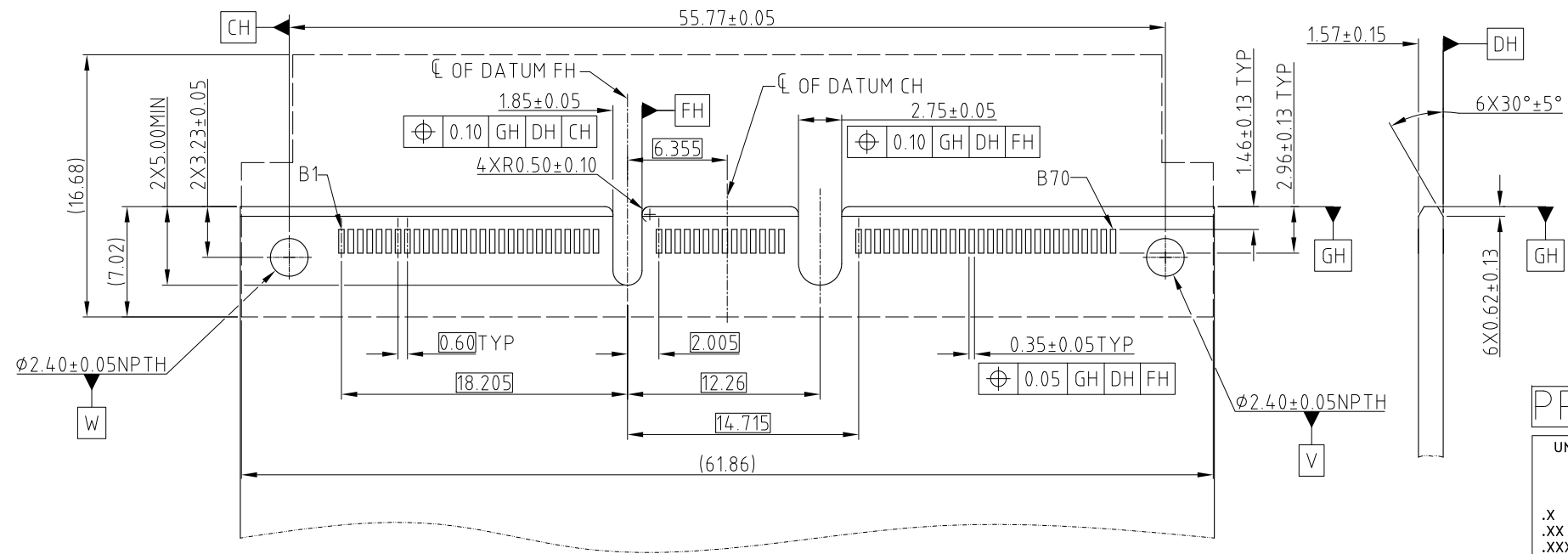
REVISIONS				
SYM	ECN	DESCRIPTION	DATE	APPROVED
		SEE SHEET 1		



RECOMMENDED AIC MATING CARD



DETAIL C
SCALE 4:1



NOTE: POSITION A1 ON THE OPPOSITE SIDE OF CARD OF B1
RECOMMENDED FOOTPRINT

PROPOSAL DRAWING

UNLESS OTHERWISE SPECIFIED TOLERANCES		APPROVAL	DATE	Amphenol					
U.S. METRIC		DRAWN	Teng.Cao			Nov.08,2018			
.X	+/-	0.25	CHECKED	Ly.Yi	Nov.08,2018				
.XX	+/-	0.20	APPROVED						
.XXX	+/-	0.15	DRAWING FILE : INTERNAL\ME\C ME101401340110X						
FRACTIONS	+/-	5°	ANGLE OF PROJECTION						
ANGLES	+/-								
FOR MATERIALS AND FINISHES SEE NOTES		REMOVE SHARP EDGES		DIMENSIONS					
				<table border="1"> <tr> <td>—U.S.—</td> <td>INCHES</td> </tr> <tr> <td>(METRIC)</td> <td>(mm)</td> </tr> </table>		—U.S.—	INCHES	(METRIC)	(mm)
—U.S.—	INCHES								
(METRIC)	(mm)								
		TITLE		MINI COOL EDGE CONNECTOR					
		SIZE		DRAWING NO.					
		A3		C ME101401340110X					
		SCALE		NONE					
		SHEET		2 OF 2					
		REV.		2					