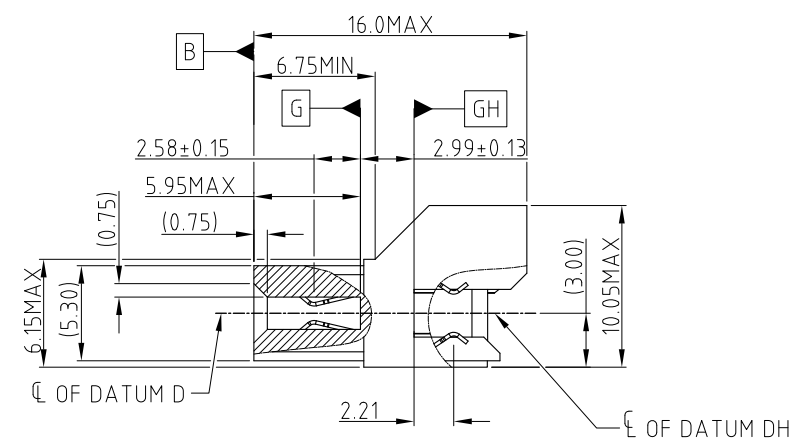
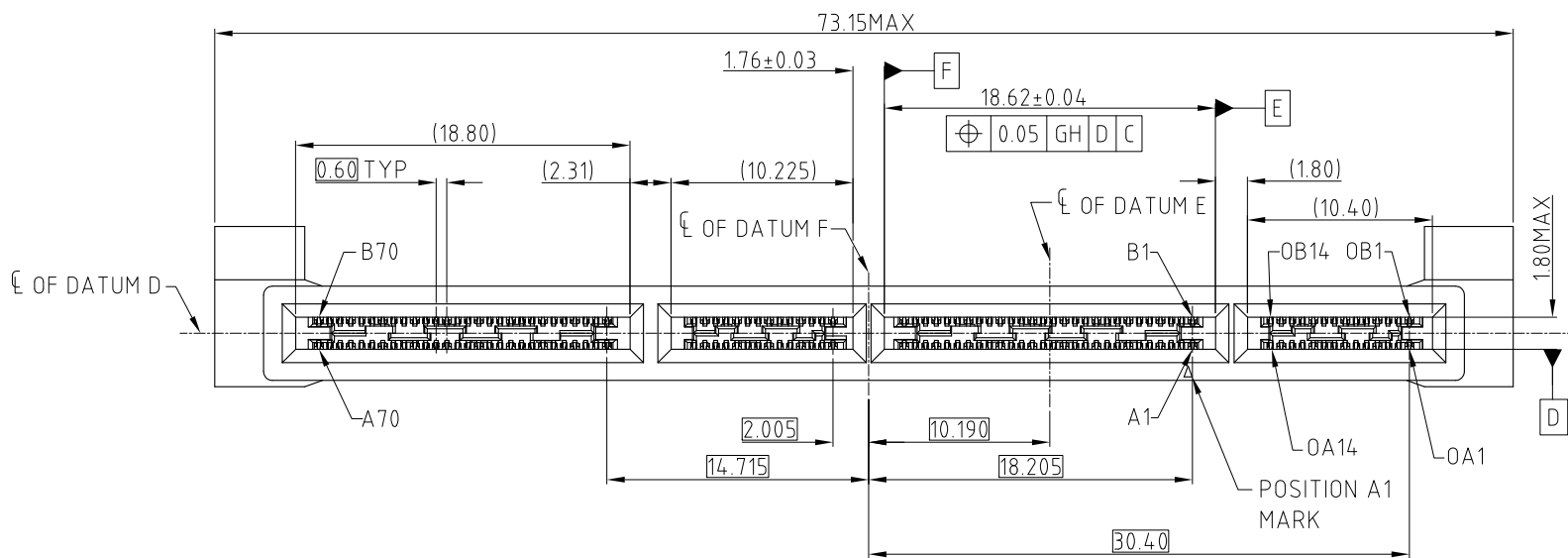


This document is the property of Amphenol Corporation and is delivered on the express condition that it is not to be disclosed, reproduced or used, in whole or in part, for manufacture or sale by anyone other than Amphenol Corporation without its prior consent, & that no right is granted to disclose or to use any information in this document.

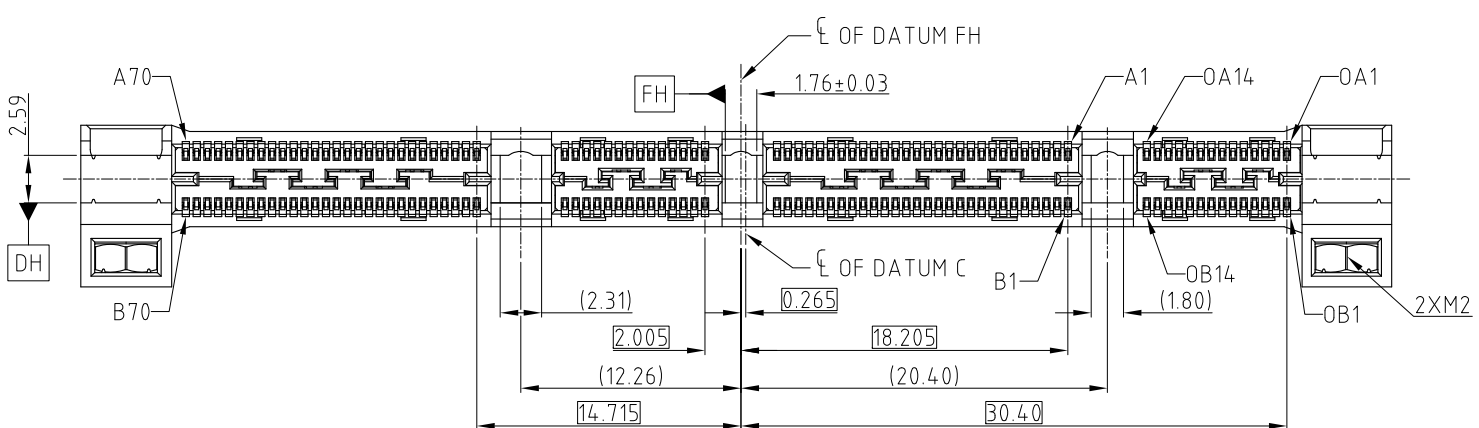
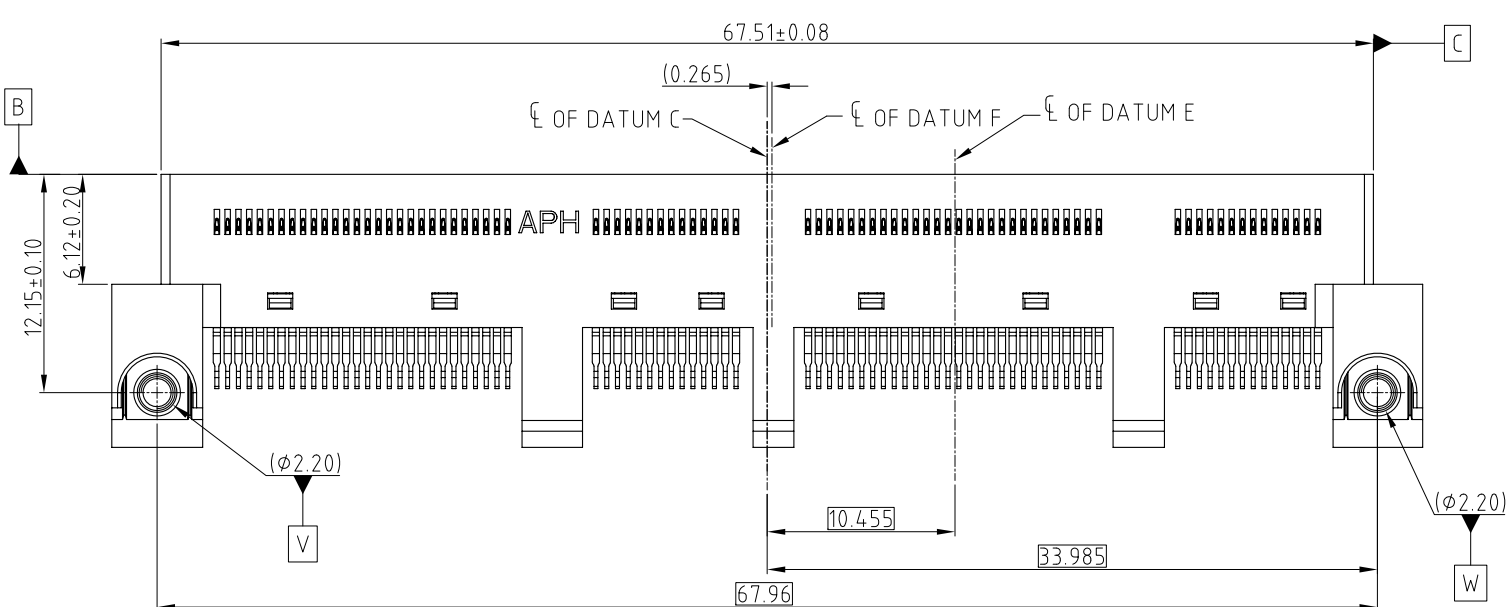
CUSTOMER DRAWING

| REVISIONS | | | | |
|-----------|--------|---|-------------|----------|
| SYM | ECN | DESCRIPTION | DATE | APPROVED |
| 1 | CDXXXX | PRELIMINARY PROPOSAL | May.30,2018 | YH |
| 2 | CDXXXX | REVISE THE PCB THICKNESS TOLERANCE AND SLOT | Aug.17,2018 | YH |
| 3 | CDXXXX | UPDATED BY SFF TA 1002 REV 1.1.3 | Nov.08,2018 | YH |



- NOTE:
- MATERIAL:
HOUSING: HIGH TEMPERATURE THERMOPLASTIC BLACK UL94-V0
CONTACT: COPPER ALLOY
NUT: STAINLESS STEEL
 - PLATING:
CONTACT: MATING AREA: Au THICKNESS PLEASE REFER TO PN SYSTEM, 1.27-2.54 μm NICKEL UNDERPLATED
SOLDER AREA: 1.27 μm MIN TIN OVER 1.27-2.54 μm NICKEL UNDERPLATED
 - ELECTRICAL PERFORMANCE:
RATED CURRENT: 1.1A/PIN UP TO 12PINS
LLCR: 30mΩ MAX, DELTA 15 mΩ.
INSULATION RESISTANCE: 1000MΩ MIN
 - DURABILITY: 200 CYCLES.
 - MATERIAL SHOULD BE FULFILLED AMPHENOL SPEC#S-SN-002 AND S-SN-004
 - ORDERING PN SYSTEM ME101681340120X

- PLATING SPEC
- 0.76um Au
 - 0.38um Au
 - GOLD FLASH
 - PdNi 0.76um+G/F



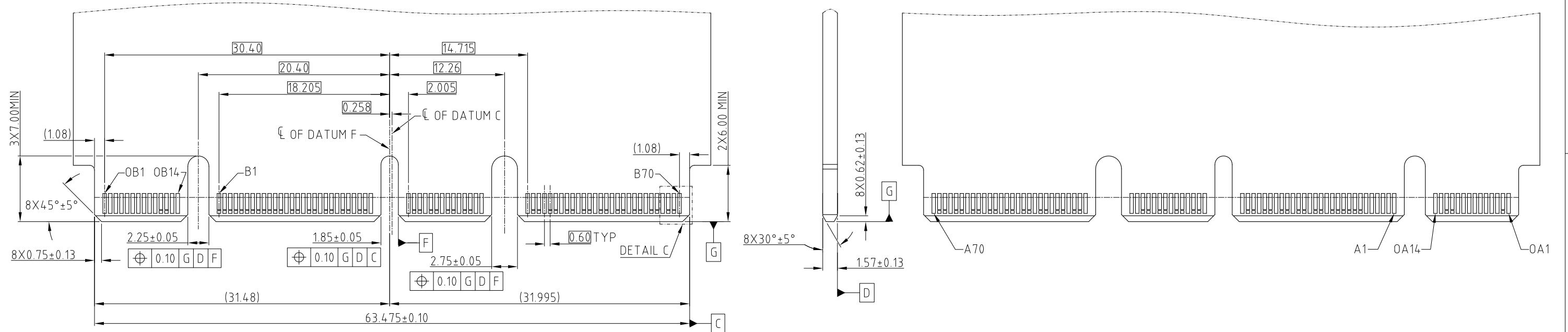
PROPOSAL DRAWING

| | | | |
|--|-------------------------------|-------------|---|
| UNLESS OTHERWISE SPECIFIED TOLERANCES U.S. METRIC .X +/- 0.25 .XX +/- 0.20 .XXX +/- 0.15 FRACTIONS +/- ANGLES +/- 5° FOR MATERIALS AND FINISHES SEE NOTES REMOVE SHARP EDGES DIMENSIONS —U.S.— INCHES (METRIC) (mm) | APPROVAL | DATE | Amphenol TITLE MINI COOL EDGE CONNECTOR 168P S/M MATE 2.36 HOST PCB SIZE DRAWING NO. REV. A3 C ME101681340120X 3 SCALE NONE SHEET 1 OF 2 |
| | DRAWN Teng.Cao | Nov.08,2018 | |
| | CHECKED Ly.Yi | Nov.08,2018 | |
| | APPROVED | | |
| | DRAWING FILE : | | |
| | INTERNAL\ME\C ME101681340120X | | |
| | ANGLE OF PROJECTION | | |
| | | | |

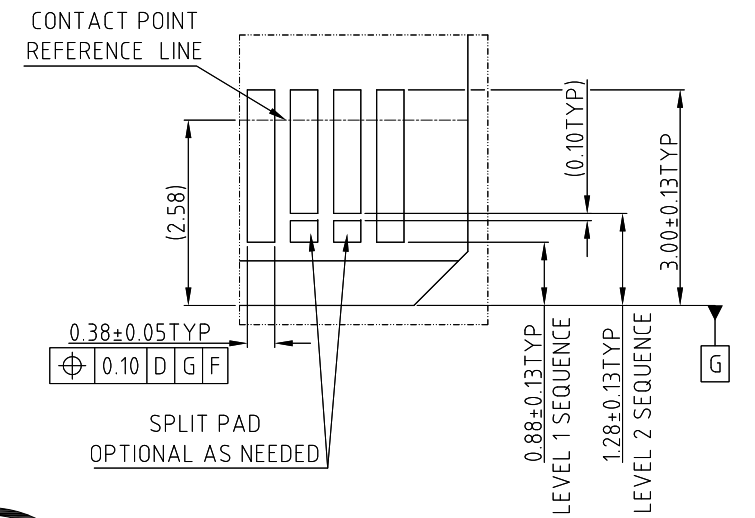
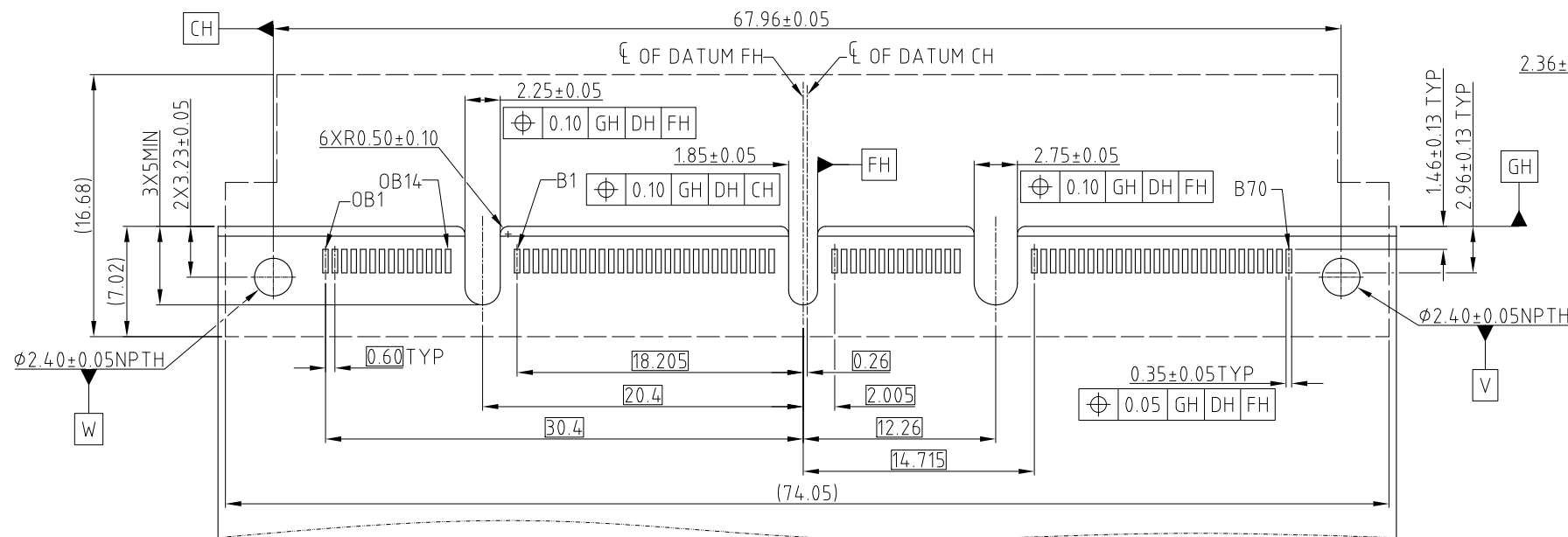
This document is the property of Amphenol Corporation and is delivered on the express condition that it is not to be disclosed, reproduced or used, in whole or in part, for manufacture or sale by anyone other than Amphenol Corporation without its prior consent, & that no right is granted to disclose or to use any information in this document.

CUSTOMER DRAWING

| REVISIONS | | | | |
|-----------|-----|-------------|------|----------|
| SYM | ECN | DESCRIPTION | DATE | APPROVED |
| | | SEE SHEET 1 | | |



RECOMMENDED AIC MATING CARD



DETAIL C
SCALE 4:1



PROPOSAL DRAWING

| | | |
|--|---|-------------|
| UNLESS OTHERWISE SPECIFIED TOLERANCES U.S. METRIC .X +/- 0.25 .XX +/- 0.20 .XXX +/- 0.15 FRACTIONS +/- 5° ANGLES +/- 5° FOR MATERIALS AND FINISHES SEE NOTES REMOVE SHARP EDGES DIMENSIONS —U.S.— INCHES (METRIC) (mm) | APPROVAL | DATE |
| | DRAWN Teng.Cao | Nov.08,2018 |
| | CHECKED Ly.Yi | Nov.08,2018 |
| | APPROVED | |
| | DRAWING FILE : INTERNAL\ME\C ME101681340120X | |
| | ANGLE OF PROJECTION | |
| | | |

| | | |
|--|-------------------|--------------|
| Amphenol | | |
| TITLE MINI COOL EDGE CONNECTOR 168P S/M MATE 2.36 HOST PCB | | |
| SIZE | DRAWING NO. | REV. |
| A3 | C ME101681340120X | 3 |
| SCALE | NONE | SHEET 2 OF 2 |

NOTE: POSITION A1 ON THE OPPOSITE SIDE OF CARD OF B1
RECOMMENDED FOOTPRINT