

8 7 6 5 4 3 2 1

REVISIONS				
REV.	ECN	DESCRIPTION	DATE	APPROVED
A		INITIAL RELEASE	APR16/15	CM

AMPHENOL PART NUMBER CONFIGURATION
U98 - B 1 C X - X X X X

HEAT SINK OPTION
C = HEATSINK CLIP INCLUDED, WITHOUT HEAT SINK

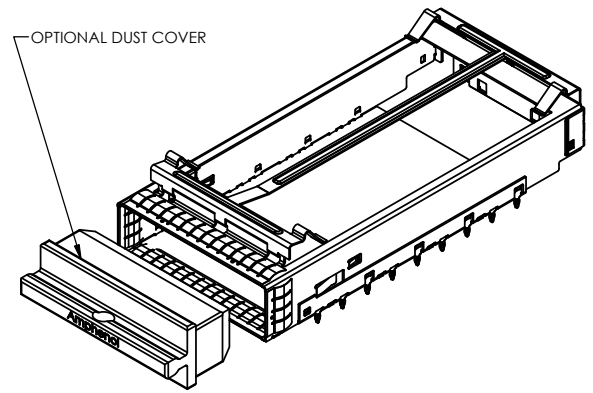
INSULATING TAPE OPTION
1 = STANDARD (NO INSULATING TAPE)
2 = WITH INSULATING TAPE ON BOTTOM CAGE

PLATING
1 = NICKEL

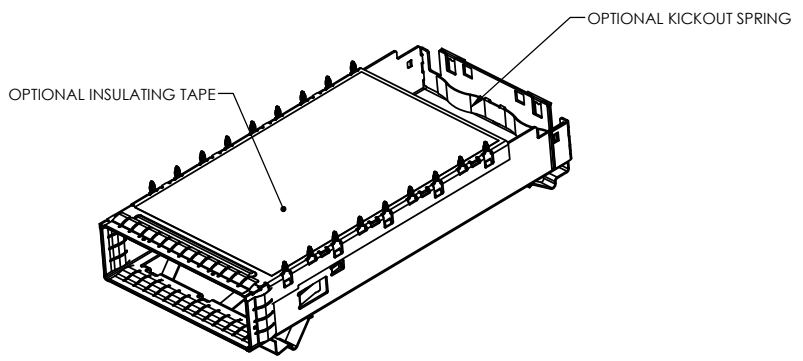
DUST COVER OPTION
0 = WITHOUT DUST COVER
D = WITH DUST COVER (PACKAGED SEPARATELY)

PACKAGING
1 = TRAY PACKAGING

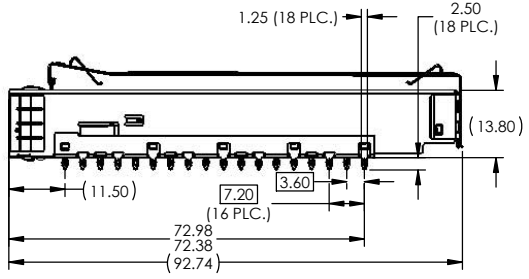
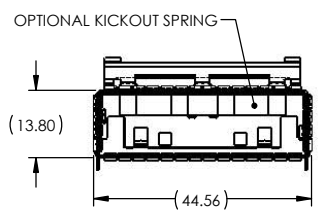
CONNECTOR COVER
0 = WITH CONNECTOR COVER, NO KICKOUT SPRING
A = WITHOUT CONNECTOR COVER OR KICKOUT SPRING
B = WITHOUT CONNECTOR COVER, WITH KICKOUT SPRING
C = WITH CONNECTOR COVER & KICKOUT SPRING



VIEW OF CAGE ASSEMBLY WITHOUT HEAT SINK, CLIP INCLUDED AND SHOWN IN PLACE, WITHOUT CONNECTOR COVER OR KICKOUT SPRING (P/N U98-B1C1-1DA1)



BOTTOM VIEW OF CAGE ASSEMBLY WITH STANDARD HEAT SINK, KICK-OUT SPRING, AND INSULATING TAPE OPTION, WITHOUT CONNECTOR COVER (P/N U98-B1C2-10B1)



NOTES:

- CAGE AND EMI SPRINGS MATERIAL: COPPER ALLOY
HEAT SINK CLIP MATERIAL: STEEL ALLOY
HEAT SINK MATERIAL: ALUMINUM
CONNECTOR COVER: ZINC ALLOY
INSULATING TAPE: POLYIMIDE FILM
CAGE PLATING: 3.81µm (100µin) MIN. NICKEL
DUST COVER: CONDUCTIVE RUBBER
- CAGE IS INTENDED TO BE COMPLIANT WITH THE CFP2 TRANSCEIVER SPECIFICATION.
- M1.4 STEEL SCREWS (2 PCS) ARE INCLUDED WITH CONNECTOR COVER OPTIONS (PACKAGED SEPARATELY). RECOMMENDED TORQUE IS 0.90±0.10in-lb.



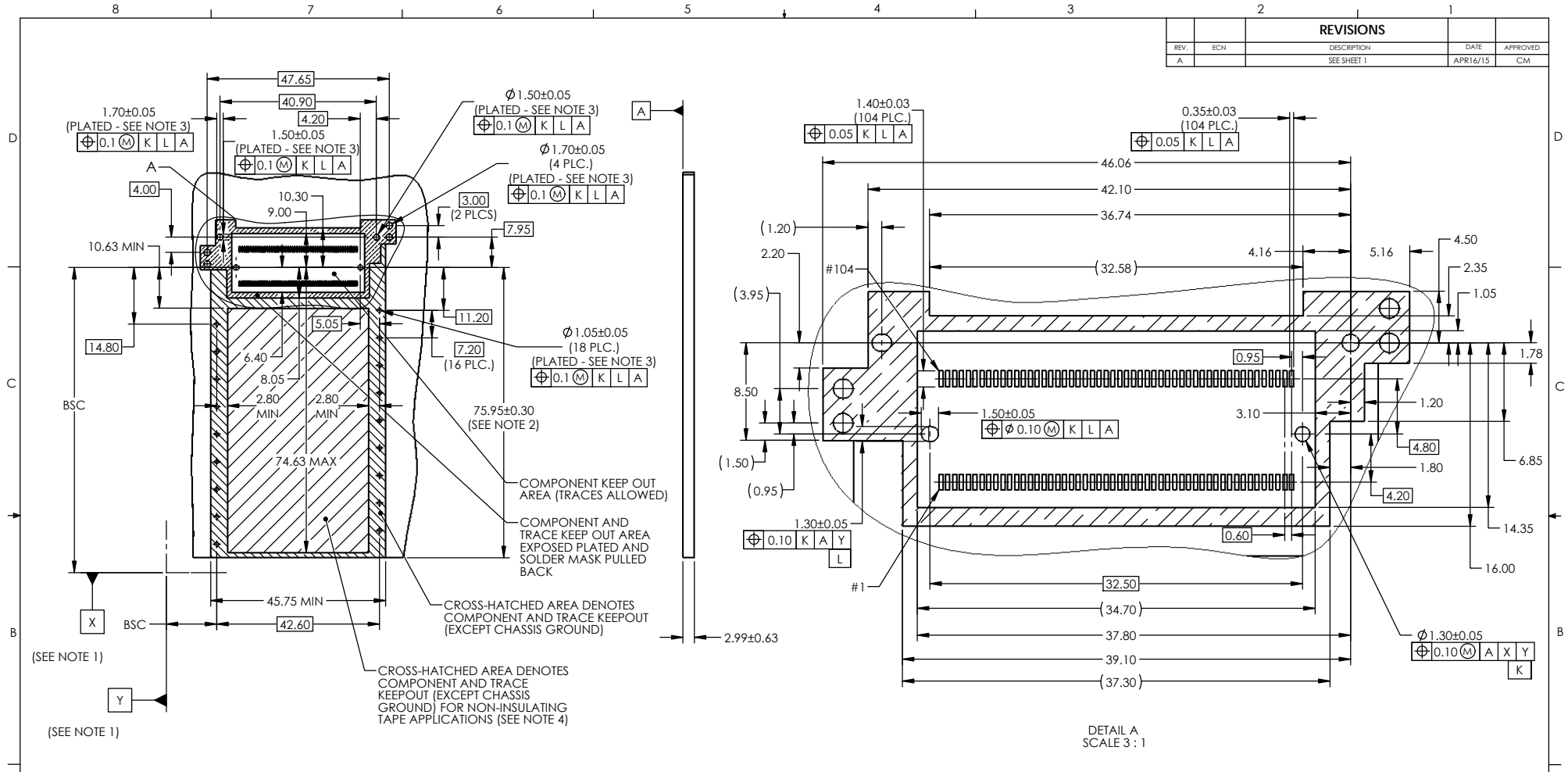
DO NOT SCALE DRAWING

THIS DOCUMENT CONTAINS PROPRIETARY INFORMATION AND SUCH INFORMATION MAY NOT BE DISCLOSED TO OTHERS FOR ANY PURPOSE OR USED FOR MANUFACTURING PURPOSES WITHOUT PERMISSION FROM AMPHENOL CANADA CORP.

UNLESS OTHERWISE SPECIFIED DIMENSIONS ARE IN MILLIMETERS TOLERANCES ARE:		APPROVALS		DATE		Amphenol High Speed Interconnects				
DECIMALS	ANGLES	DRAWN	C.CHAN	APR06/15	TITLE					
XX ± 0.15	± 0.5°	DESIGNED	C.MICHLIK	APR06/15	CFP2 SINGLE PORT CAGE ASSEMBLY WITH PRESS FIT PINS					
XXX ± 0.10		CHECKED	C.MICHLIK	APR16/15	PROJECT					
MATERIAL AND FINISH		GA APPD	SHEET 1 OF 4							
SEE NOTE 1		REF.	REV. A							
CODE IDENT. NO.	03554	E APPD	SIZE A3							
		DWG APPD	C.MICHLIK	APR16/15	SCALE	1:1	PROJECT	P-U98-B1CX-XXXX	REV.	A

8 7 6 5 4 3 2 1

REVISIONS				
REV.	ECN	DESCRIPTION	DATE	APPROVED
A		SEE SHEET 1	APR16/15	CM



RECOMMENDED PC BOARD LAYOUT
(COMPONENT SIDE OF BOARD)

NOTES:

- DATA X AND Y ESTABLISHED BY CUSTOMER'S FIDUCIAL.
- LOCATION OF EDGE OF PCB IS APPLICATION SPECIFIC.
- FINISHED HOLE SIZE.
- COMPONENTS AND TRACES IN INDICATED AREA ARE ONLY ALLOWED FOR APPLICATIONS WITH INSULATING TAPE

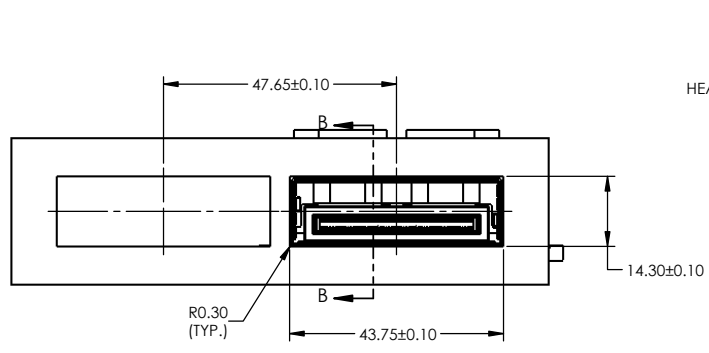
DO NOT SCALE DRAWING

THIS DOCUMENT CONTAINS PROPRIETARY INFORMATION AND SUCH INFORMATION MAY NOT BE DISCLOSED TO OTHERS FOR ANY PURPOSE OR USED FOR MANUFACTURING PURPOSES WITHOUT PERMISSION FROM AMPHENOL CANADA CORP.

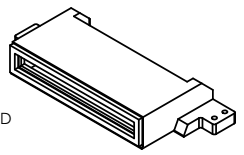
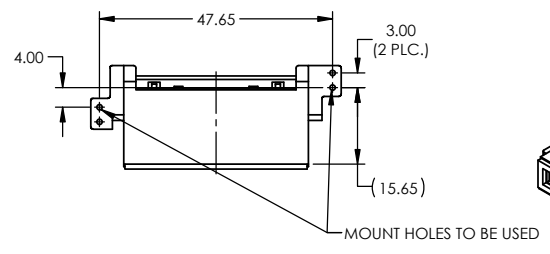
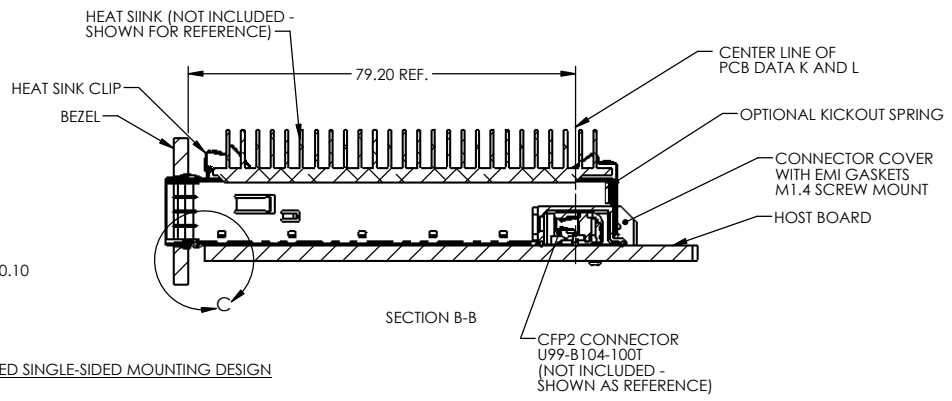
DETAIL A
SCALE 3 : 1

UNLESS OTHERWISE SPECIFIED DIMENSIONS ARE IN MILLIMETERS TOLERANCES ARE: DECIMALS ANGLES X.X ± 0.15 ± 0.5° X.XX ± 0.10	APPROVALS	DATE	Amphenol High Speed Interconnects		
	DRAWN C.CHAN	APR06/15			
	DESIGNED C.MICHLIK	APR06/15	CFP2 SINGLE PORT CAGE ASSEMBLY WITH PRESS FIT PINS		
	CHECKED C.MICHLIK	APR16/15			
MATERIAL AND FINISH SEE NOTE 1	GA APPD		SIZE A3	DWG. NO. P-U98-B1CX-XXXX	REV. A
REF.	E APPD		SCALE 1:1	PROJECT	SHEET 2 OF 4
CODE IDENT. NO. 03554	DWG APPD C.MICHLIK	APR16/15			

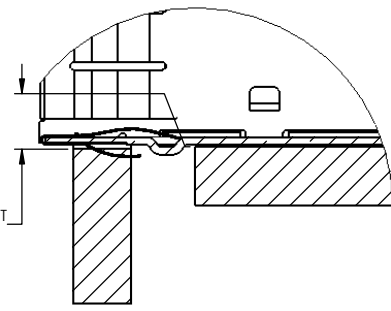
REVISIONS				
REV.	ECN	DESCRIPTION	DATE	APPROVED
A		SEE SHEET 1	APR16/15	CM



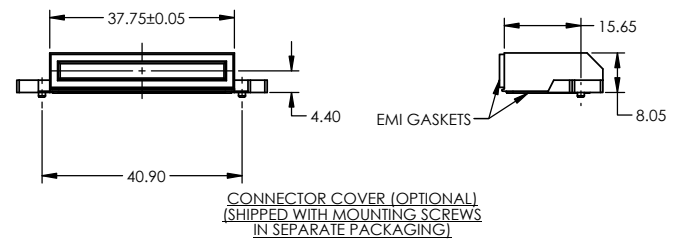
RECOMMENDED SINGLE-SIDED MOUNTING DESIGN



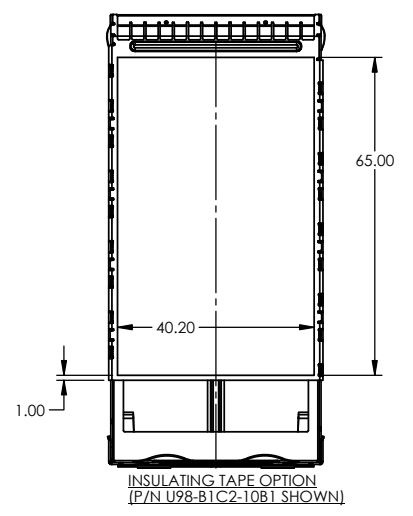
0.125±0.100
BEZEL CUT-OUT
TO PCB
(TYP.)



DETAIL C
SCALE 4 : 1



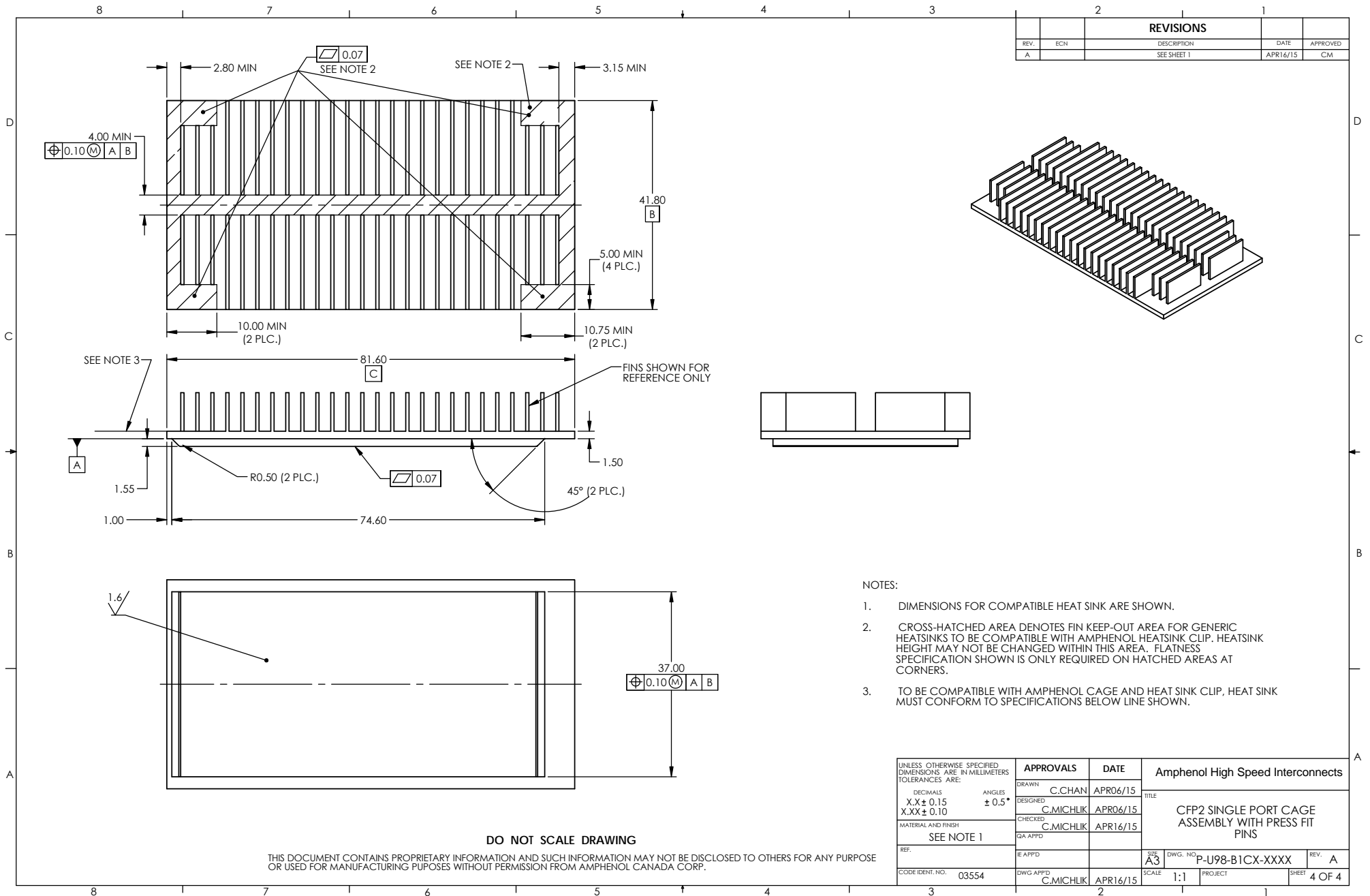
CONNECTOR COVER (OPTIONAL)
(SHIPPED WITH MOUNTING SCREWS
IN SEPARATE PACKAGING)



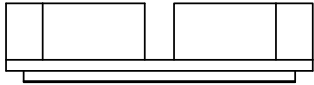
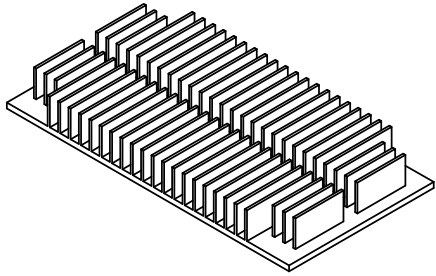
DO NOT SCALE DRAWING

THIS DOCUMENT CONTAINS PROPRIETARY INFORMATION AND SUCH INFORMATION MAY NOT BE DISCLOSED TO OTHERS FOR ANY PURPOSE OR USED FOR MANUFACTURING PURPOSES WITHOUT PERMISSION FROM AMPHENOL CANADA CORP.

UNLESS OTHERWISE SPECIFIED DIMENSIONS ARE IN MILLIMETERS TOLERANCES ARE:		APPROVALS		DATE		Amphenol High Speed Interconnects					
DECIMALS X.X ± 0.15 X.XX ± 0.10		ANGLES ± 0.5°		DRAWN C.CHAN		APR06/15		TITLE		CFP2 SINGLE PORT CAGE ASSEMBLY WITH PRESS FIT PINS	
MATERIAL AND FINISH SEE NOTE 1		CHECKED C.MICHLIK		DESIGNED C.MICHLIK		APR06/15		GA APPD		P-U98-B1CX-XXXX	
REF.		E APPD		C.MICHLIK		APR16/15		SCALE		1:1	
CODE IDENT. NO. 03554		DWG APPD C.MICHLIK		PROJECT		1		SHEET		3 OF 4	



REVISIONS				
REV.	ECN	DESCRIPTION	DATE	APPROVED
A		SEE SHEET 1	APR16/15	CM



- NOTES:
1. DIMENSIONS FOR COMPATIBLE HEAT SINK ARE SHOWN.
 2. CROSS-HATCHED AREA DENOTES FIN KEEP-OUT AREA FOR GENERIC HEATSINKS TO BE COMPATIBLE WITH AMPHENOL HEATSINK CLIP. HEATSINK HEIGHT MAY NOT BE CHANGED WITHIN THIS AREA. FLATNESS SPECIFICATION SHOWN IS ONLY REQUIRED ON HATCHED AREAS AT CORNERS.
 3. TO BE COMPATIBLE WITH AMPHENOL CAGE AND HEAT SINK CLIP, HEAT SINK MUST CONFORM TO SPECIFICATIONS BELOW LINE SHOWN.

UNLESS OTHERWISE SPECIFIED DIMENSIONS ARE IN MILLIMETERS TOLERANCES ARE:		APPROVALS		DATE		Amphenol High Speed Interconnects					
DECIMALS X.X ± 0.15 X.XX ± 0.10		ANGLES ± 0.5°		DRAWN C.CHAN		APR06/15		TITLE		CFP2 SINGLE PORT CAGE ASSEMBLY WITH PRESS FIT PINS	
MATERIAL AND FINISH		CHECKED C.MICHLIK		DESIGNED C.MICHLIK		APR06/15		GA APPD		REV. A	
SEE NOTE 1		E APPD		SCALE		1:1		PROJECT		P-U98-B1CX-XXXX	
CODE IDENT. NO. 03554		DWG APPD C.MICHLIK		APR16/15		SCALE		PROJECT		SHEET 4 OF 4	

DO NOT SCALE DRAWING

THIS DOCUMENT CONTAINS PROPRIETARY INFORMATION AND SUCH INFORMATION MAY NOT BE DISCLOSED TO OTHERS FOR ANY PURPOSE OR USED FOR MANUFACTURING PURPOSES WITHOUT PERMISSION FROM AMPHENOL CANADA CORP.